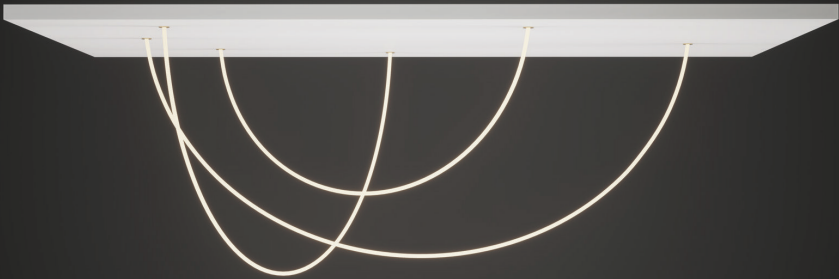
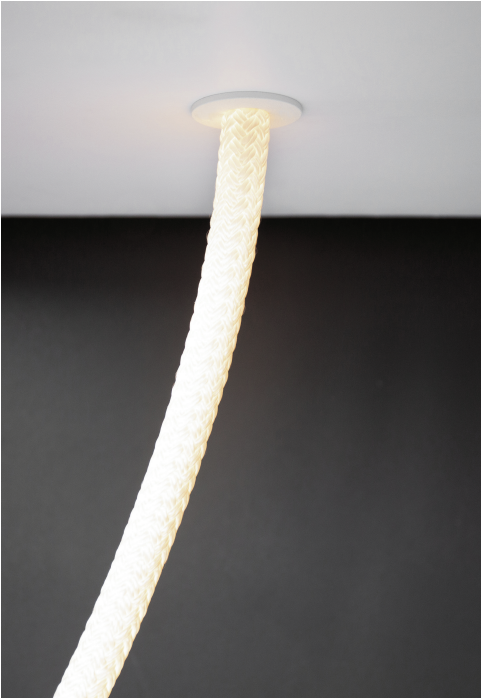


Ceiling plane in photo not included. Loops individually mount to hollow ceiling.



This is a low voltage (24VDC) fixture and must be wired with the included 24VDC driver(s). Drivers are not integral to the fixture. Learn more at lukelampco.com/drivers.



FIXTURE DETAILS

Dimensions

Maximum Drop From Ceiling: 53in
Area On Ceiling: 122in x 64in
Flush Mount Hardware Diameter: 2.25in
See shop drawings for comprehensive dimensions. Loops cannot be cut in the field.

Mounting

Mounts directly to hollow ceiling. Loops require power at one end only. For mounting to junction boxes please inquire about our adapter plate kit. See shop drawing for installation details.

Light Output

4360 lumens delivered.
113 total watts @ 24VDC.

Lamping

Dimmable 24VDC integral LED.
95+ CRI, 50,000+ hour lifespan.

Finish

Satin Brass, Blackened Brass, Antique Brass, Satin Nickel, Polished Nickel, Satin Copper, & Matte White.
More at lukelampco.com/finishes.

Color Temperature

1800K, 2000K, 2400K, 2700K, 3000K, 3500K, 4200K, & 5000K.

Drivers

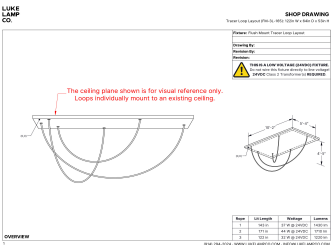
This Tracer Loop Layout must be installed with (2) 24VDC drivers, which will be included with your order.* Each driver measures 12in x 2.5in x 1.5in. Drivers must be mounted remotely, as they are not integral to the fixture. Please consult with your electrician about placement and feasibility.

* If CE is specified, we cannot supply the drivers.

SPECIFYING CODE

FIXTURE CODE	LAYOUT ID NUMBER	FINISH	COLOR TEMPERATURE	DRIVER	CERTIFICATION
TLL	FM-3L-165			UNI	

Scan the QR code below to see the shop drawing and installation manual which includes all dimensions and electrical requirements.



SCAN TO VIEW



SB - Satin Brass
BB - Blackened Brass
AB - Antique Brass
SN - Satin Nickel
PN - Polished Nickel
SC - Satin Copper
MW - Matte White

18 - 1800K
20 - 2000K
24 - 2400K
27 - 2700K
30 - 3000K
35 - 3500K
42 - 4200K
50 - 5000K



UNI - Universal Remote
MLV/ELV/010V (120-277V)

For more info, visit
lukelampco.com/drivers

DR - UL Dry (Indoor)
DM - UL Damp (Indoor)
WT - UL Wet
CR - CE Dry (Indoor)*
CM - CE Damp (Indoor)*
CW - CE Wet*

PROJECT:

APPROVED BY:

FIXTURE TYPE:

APPROVED DATE: