



POWER REQUIREMENTS

28W @ 24VDC

One Class 2 LED driver required.

DO NOT CONNECT DIRECTLY TO LINE VOLTAGE!

MOUNTING

Fixture can mount directly to a hollow wall (toggle bolts included). Two mounting points 18" apart on center.

Adapter plate included for optional j-box mounting. Fixture weighs less than 10 pounds.

TECHNICAL SUPPORT

Need help styling the rope?

Scan the QR code to view the fixture in 3D!

Call us at the number below if you need help.



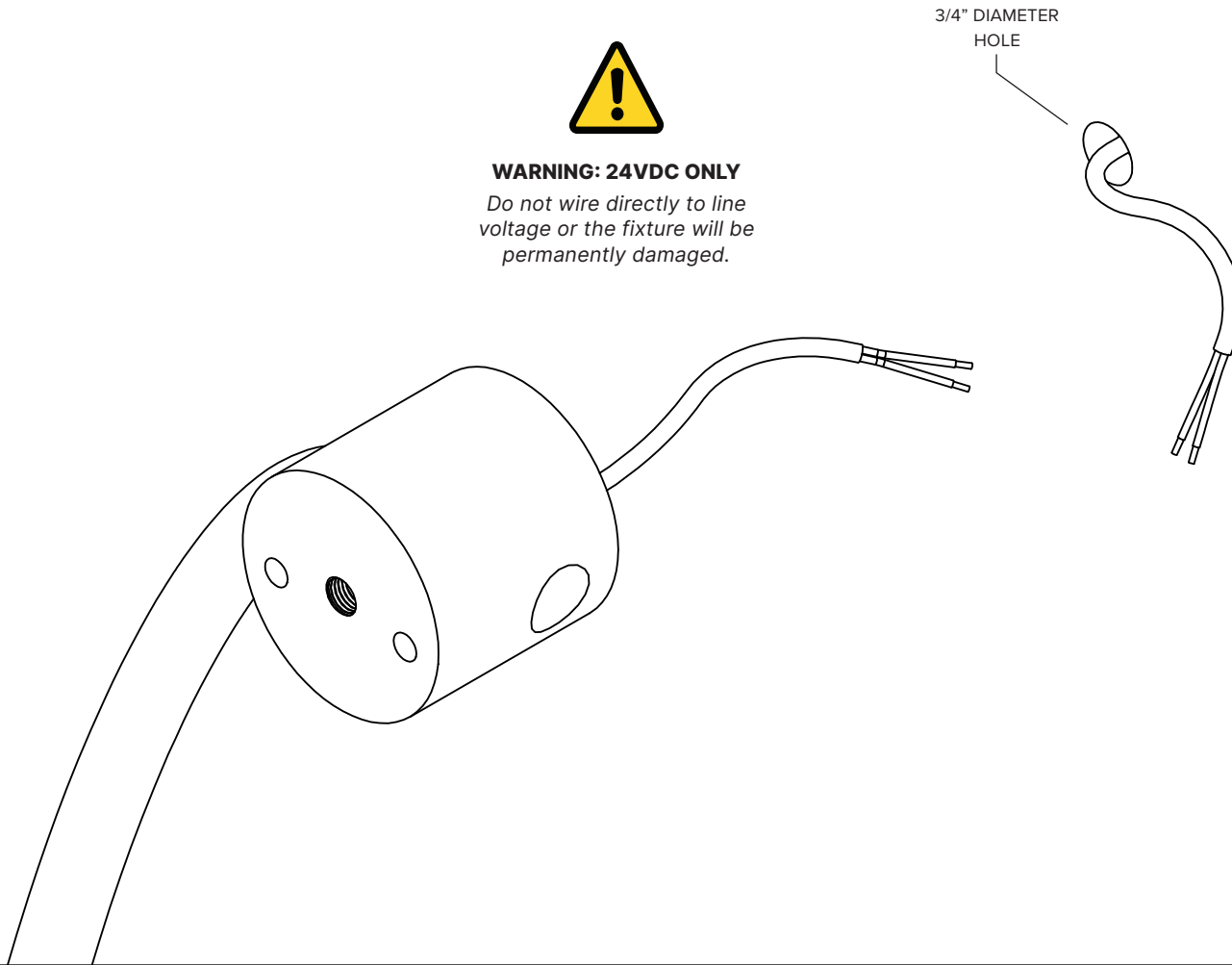
Shield Sconce 6.2 - Direct-To-Wall Mounting



WARNING: 24VDC ONLY

Do not wire directly to line voltage or the fixture will be permanently damaged.

3/4" DIAMETER
HOLE

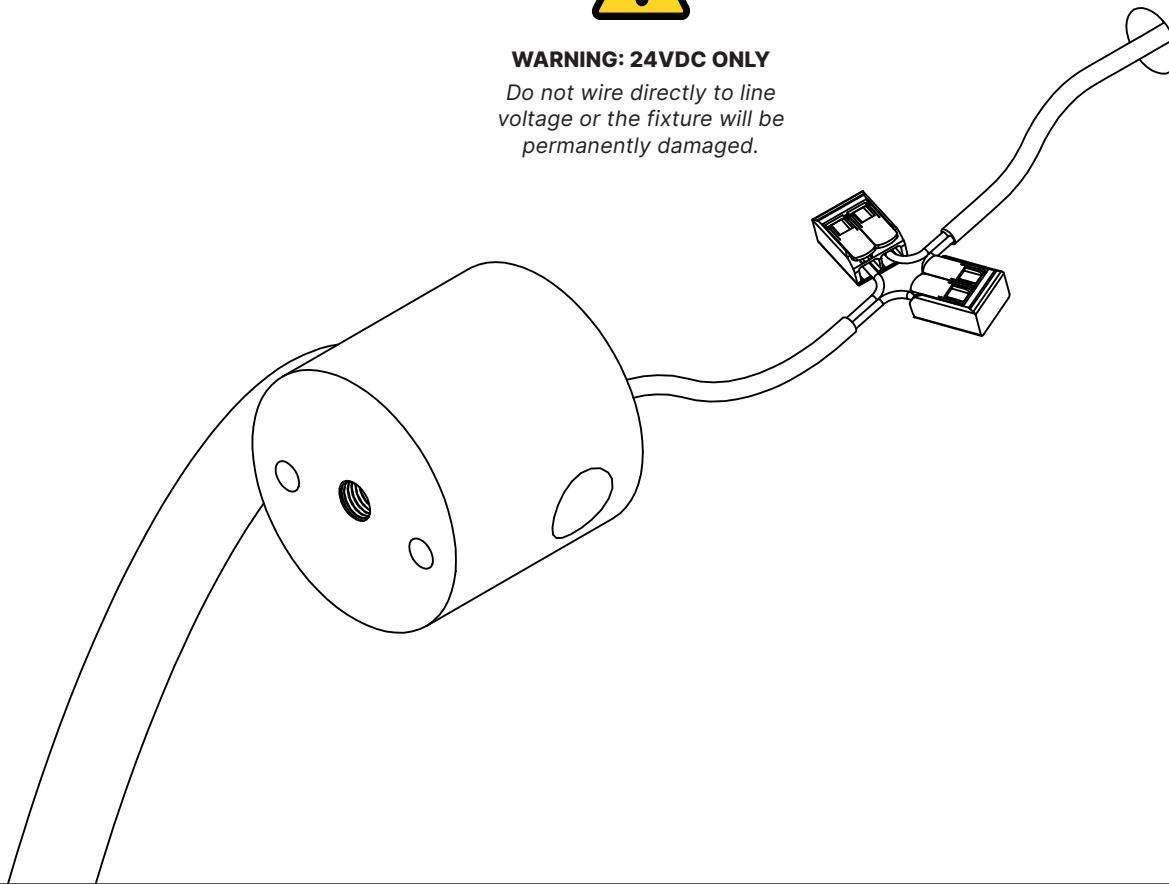


Shield Sconce 6.2 - Direct-To-Wall Mounting

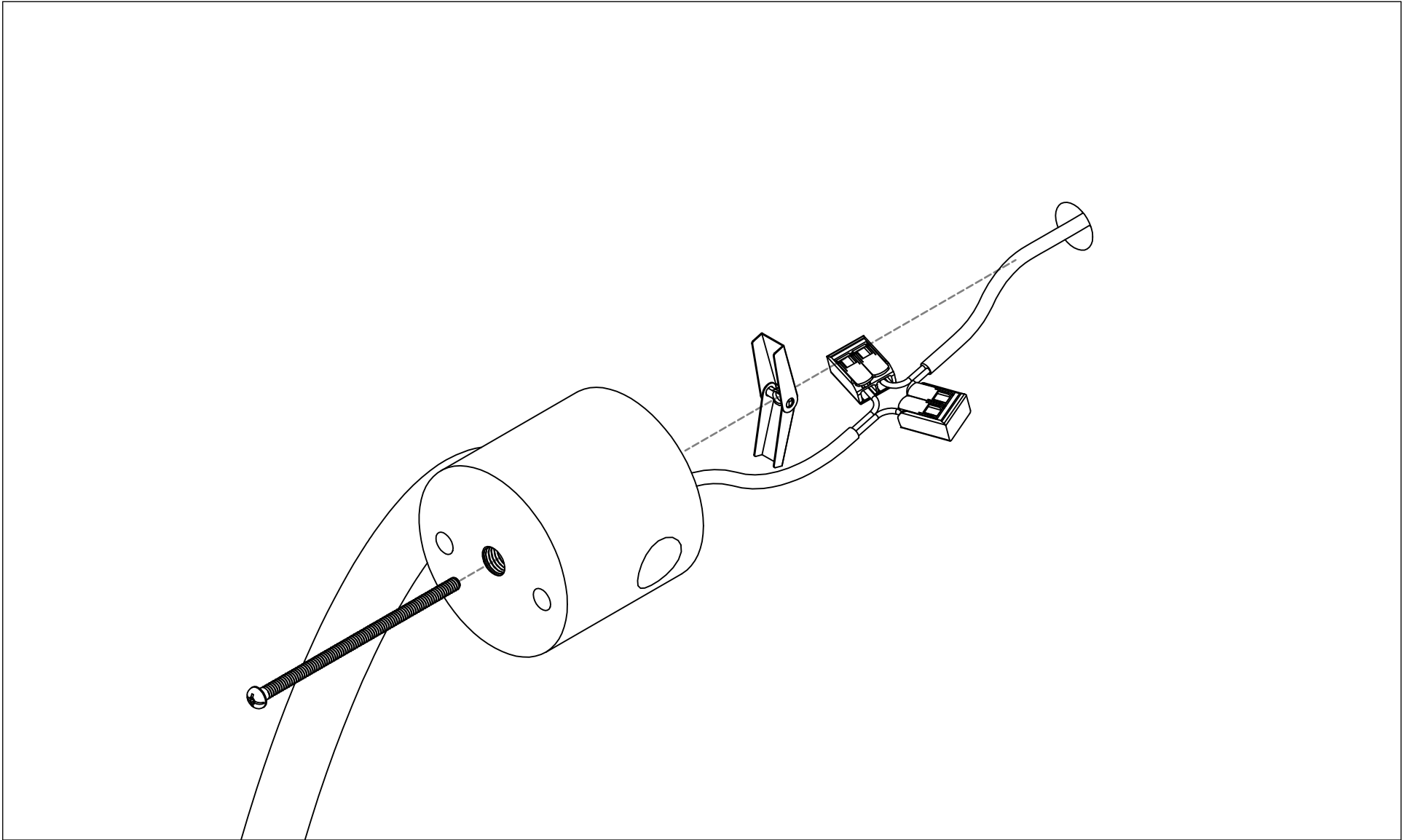


WARNING: 24VDC ONLY

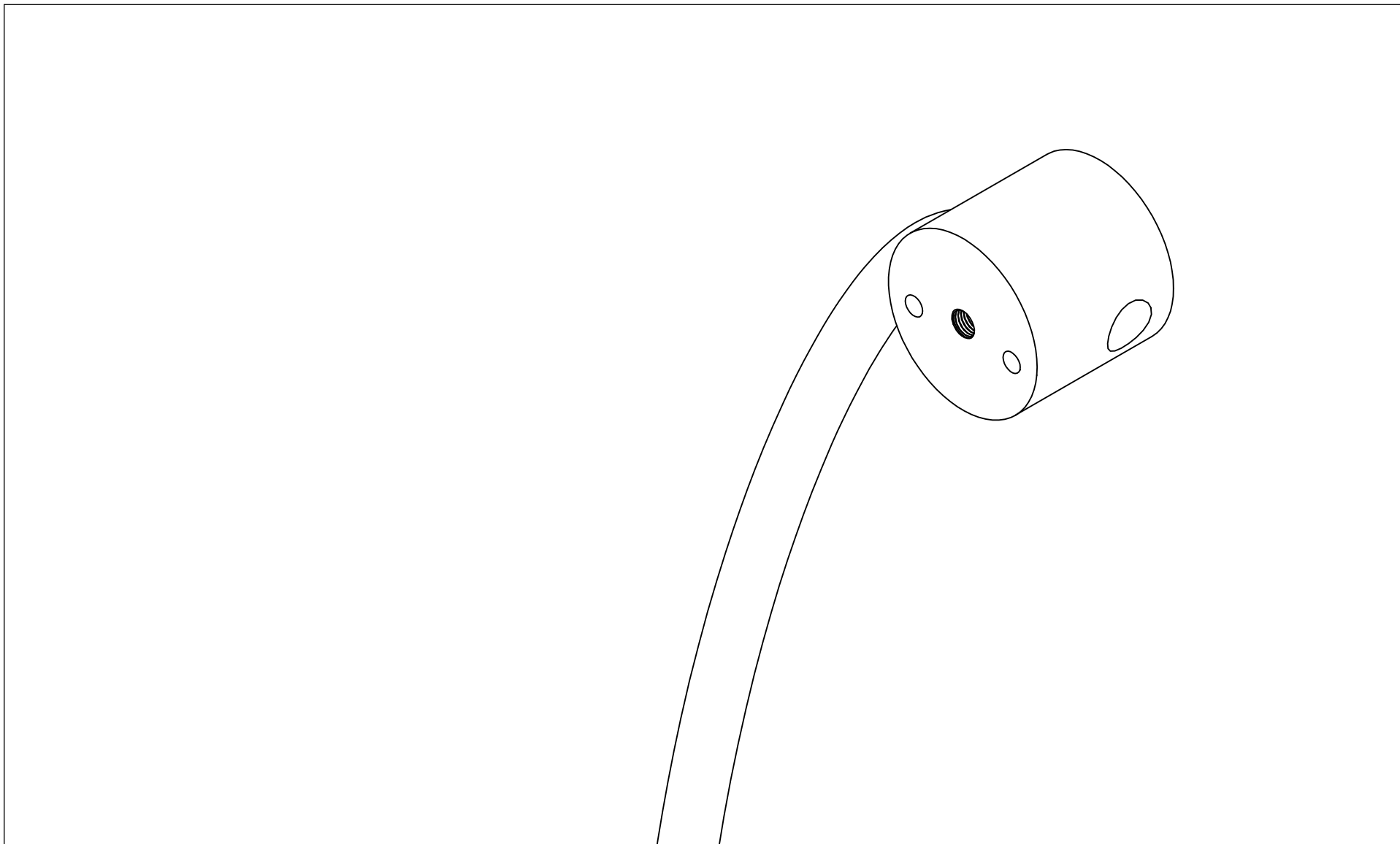
Do not wire directly to line voltage or the fixture will be permanently damaged.



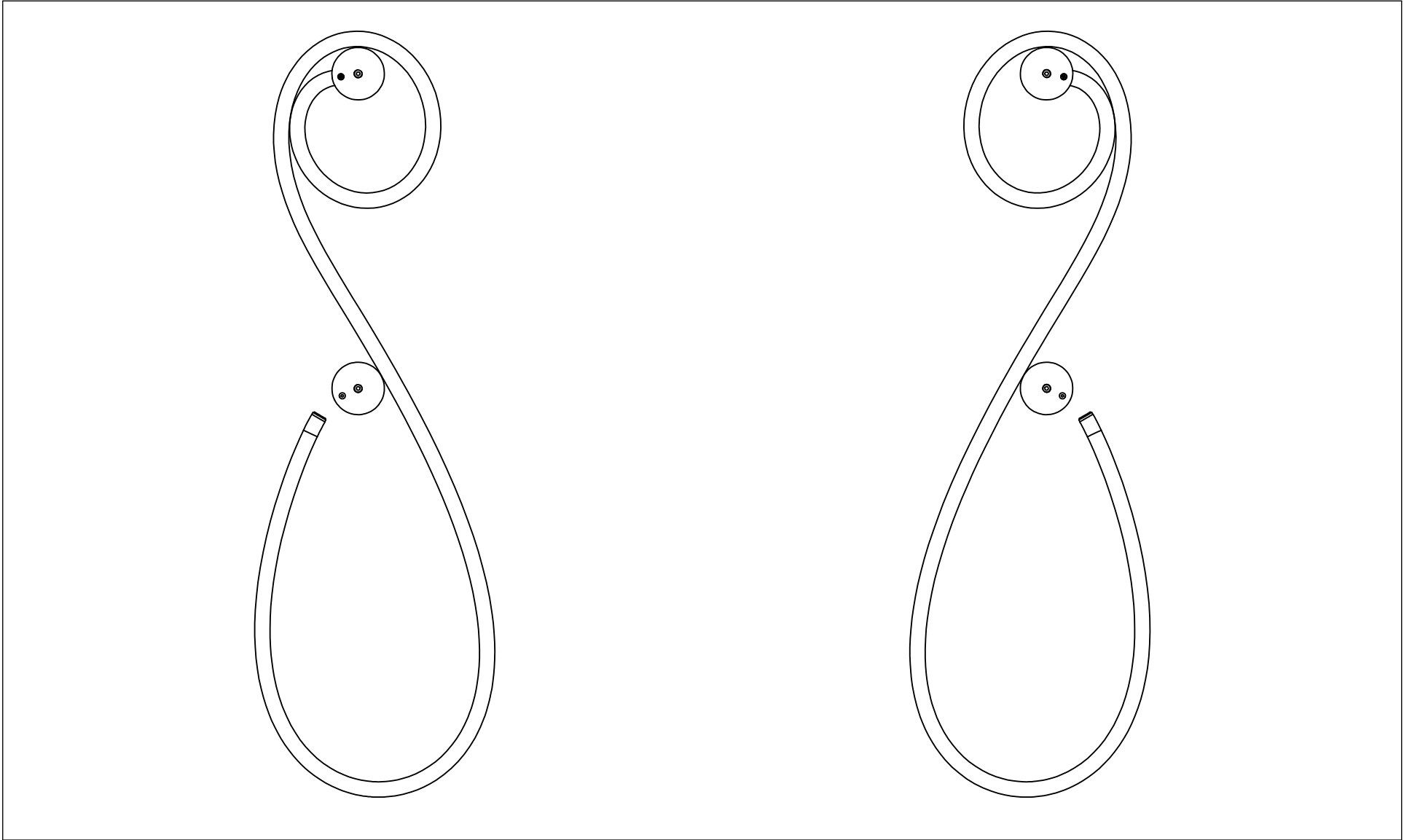
Shield Sconce 6.2 - Direct-To-Wall Mounting



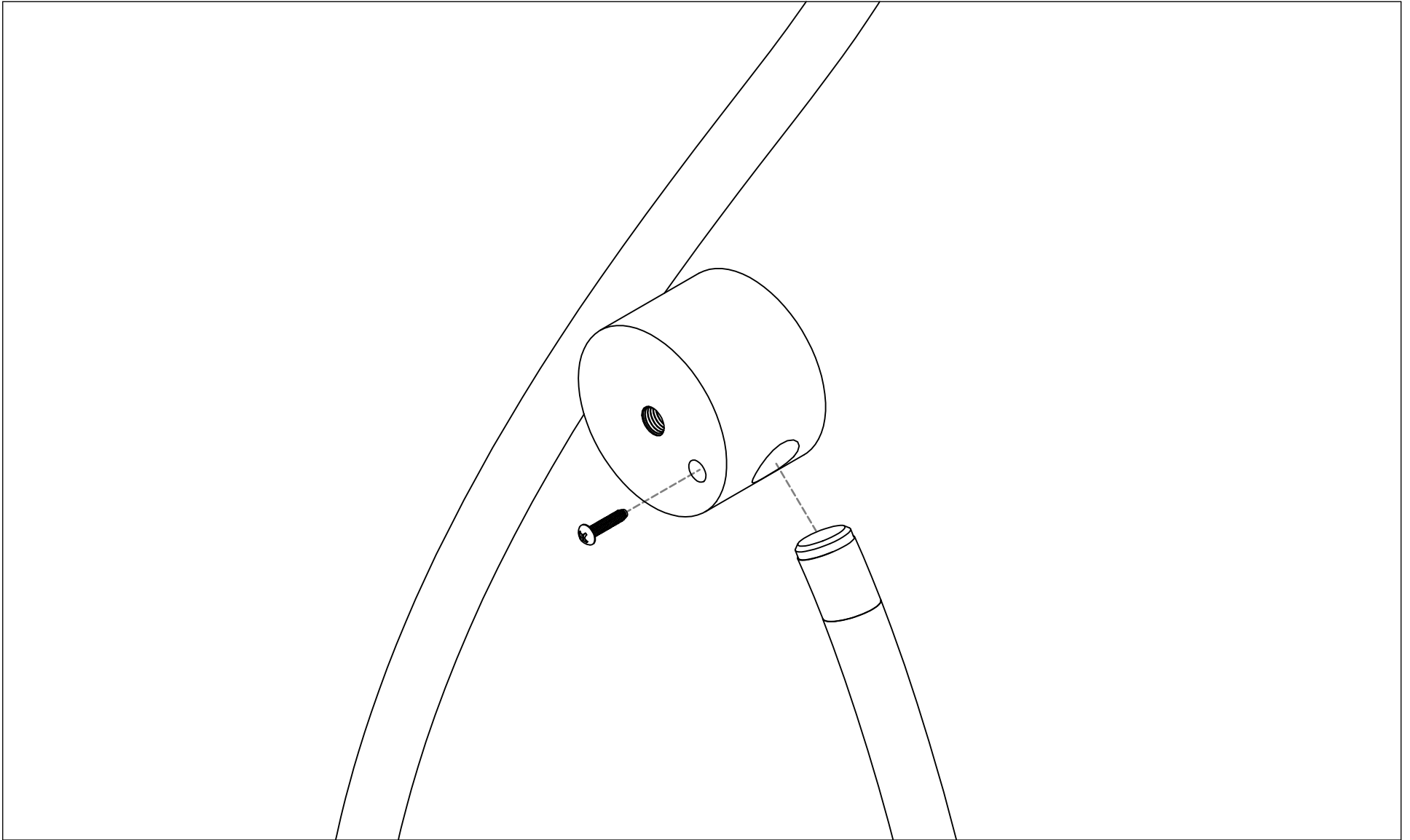
Shield Sconce 6.2 - Direct-To-Wall Mounting



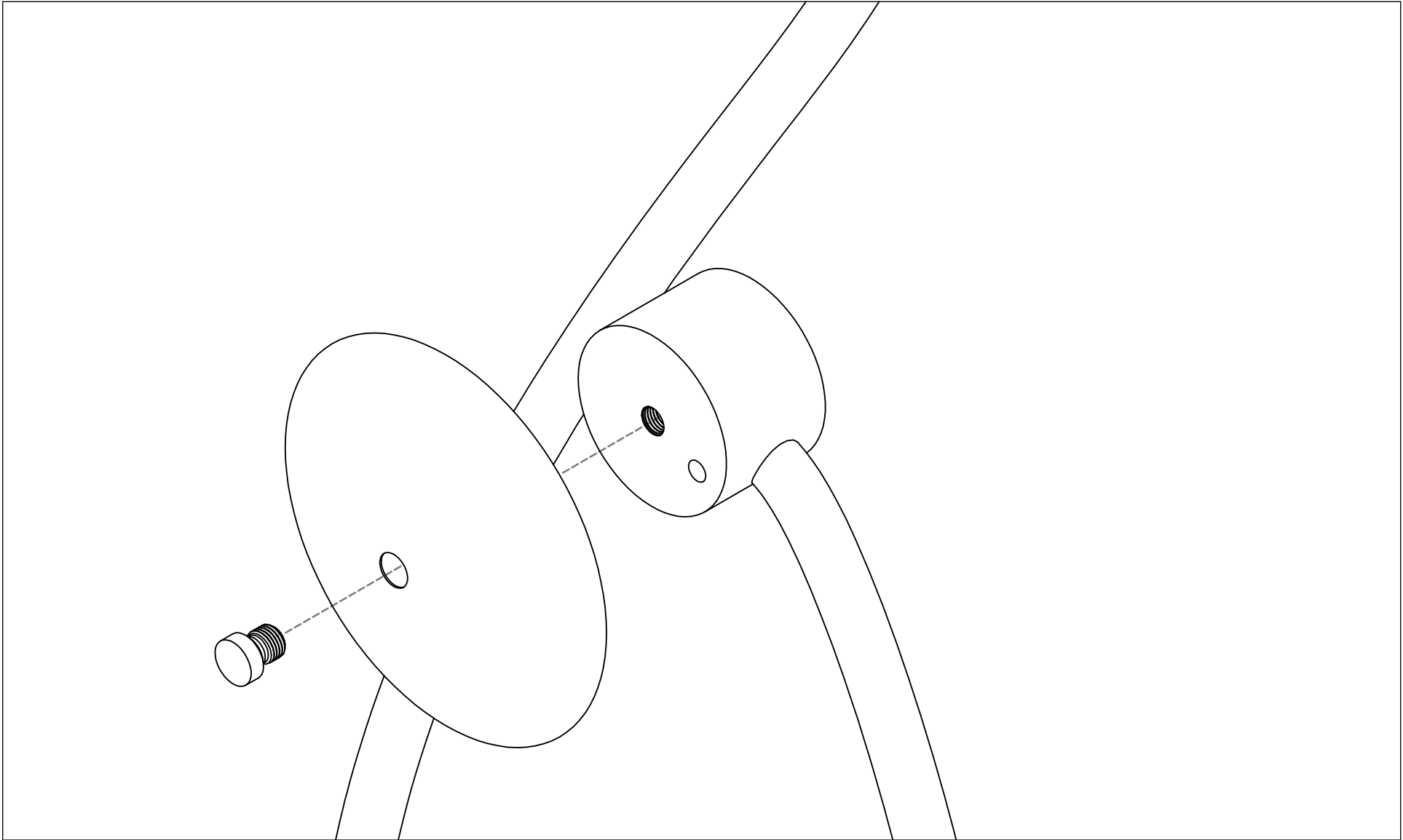
Shield Sconce 6.2 - Direct-To-Wall Mounting



Shield Sconce 6.2 - Direct-To-Wall Mounting

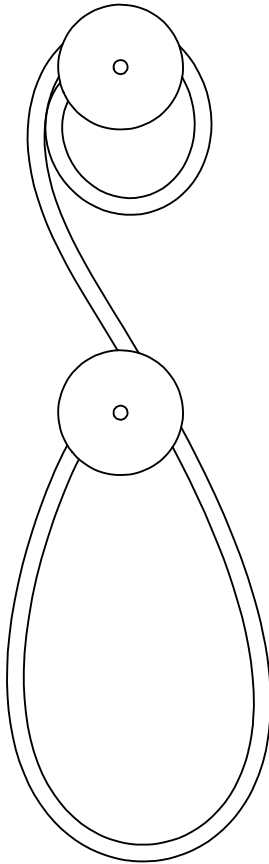


Shield Sconce 6.2 - Direct-To-Wall Mounting

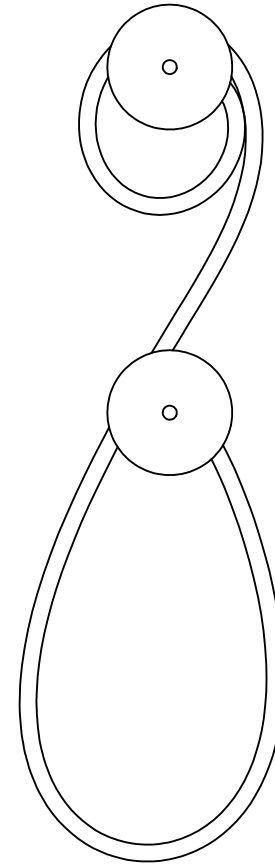


Shield Sconce 6.2 - Junction Box Mounting

LEFT ORIENTATION



RIGHT ORIENTATION



18"
CANOPY SPACING

(Top canopy is
powered, bottom is
for mounting only)



THIS IS A LOW VOLTAGE (24VDC) FIXTURE.

Do not wire this fixture directly to line voltage! The fixture requires a 24VDC Class 2 Transformer (LED Driver). The 24VDC driver must be mounted per the included manufacturer's instructions. Also, please ensure that the wiring system complies with NEC requirements.



PLEASE HANDLE WITH CARE.

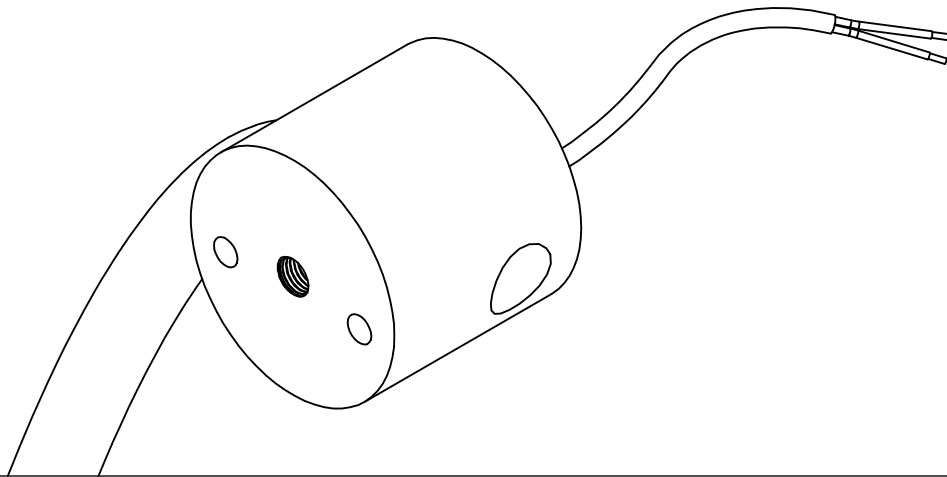
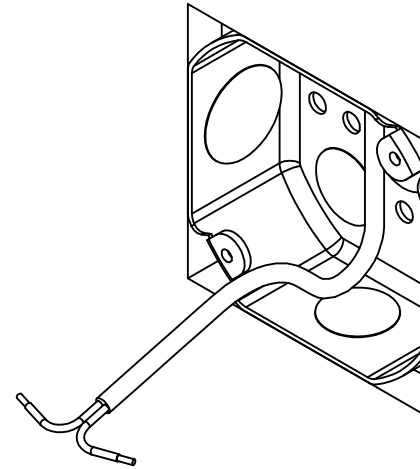
All protective packaging should be left on the fixture (especially the clear protective sleeve that covers the rope and frame) until it is completely installed and all nearby construction is complete. Failure to do so may result in the fixture being permanently damaged.

Shield Sconce 6.2 - Junction Box Mounting

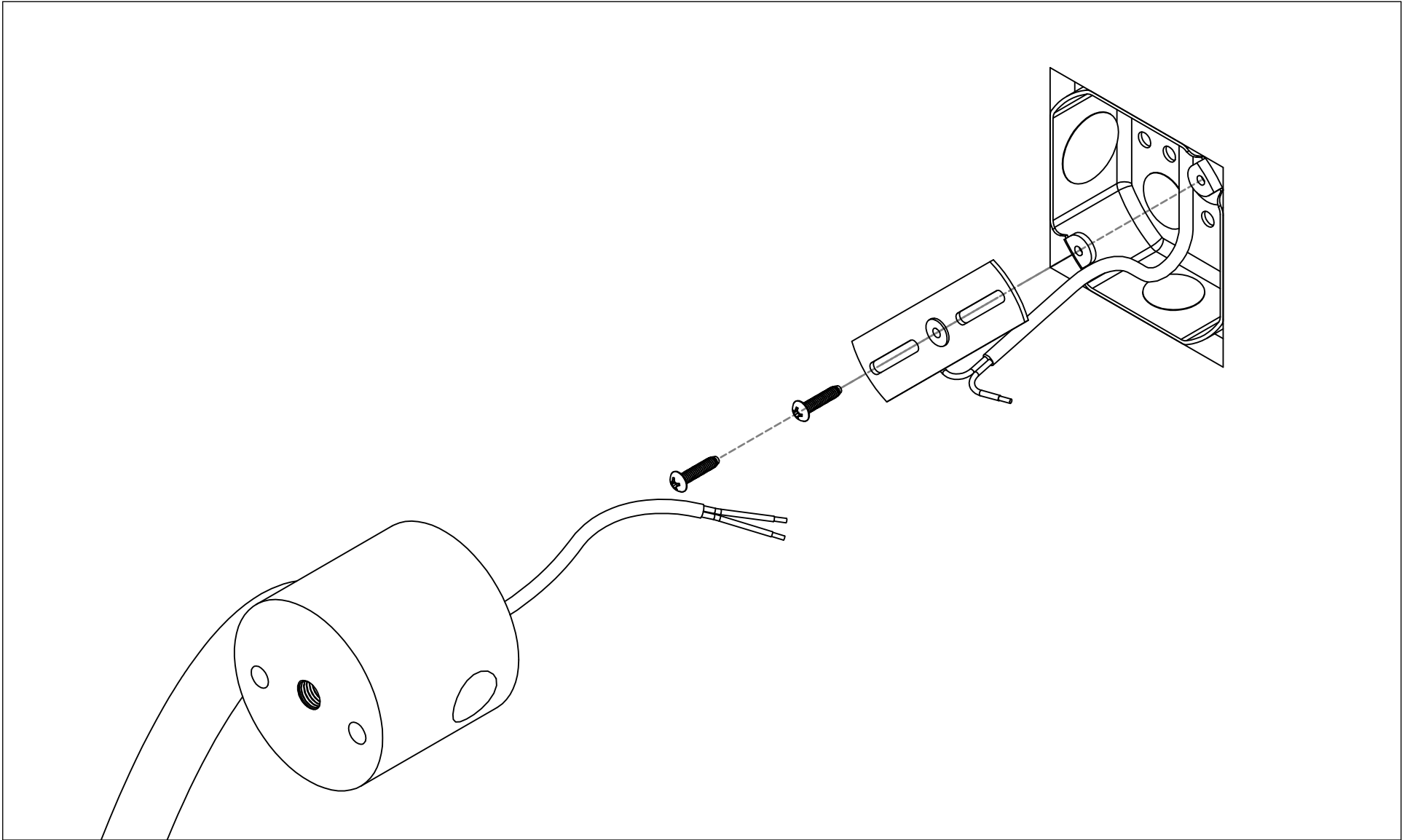


WARNING: 24VDC ONLY

Do not wire directly to line voltage or the fixture will be permanently damaged.



Shield Sconce 6.2 - Junction Box Mounting

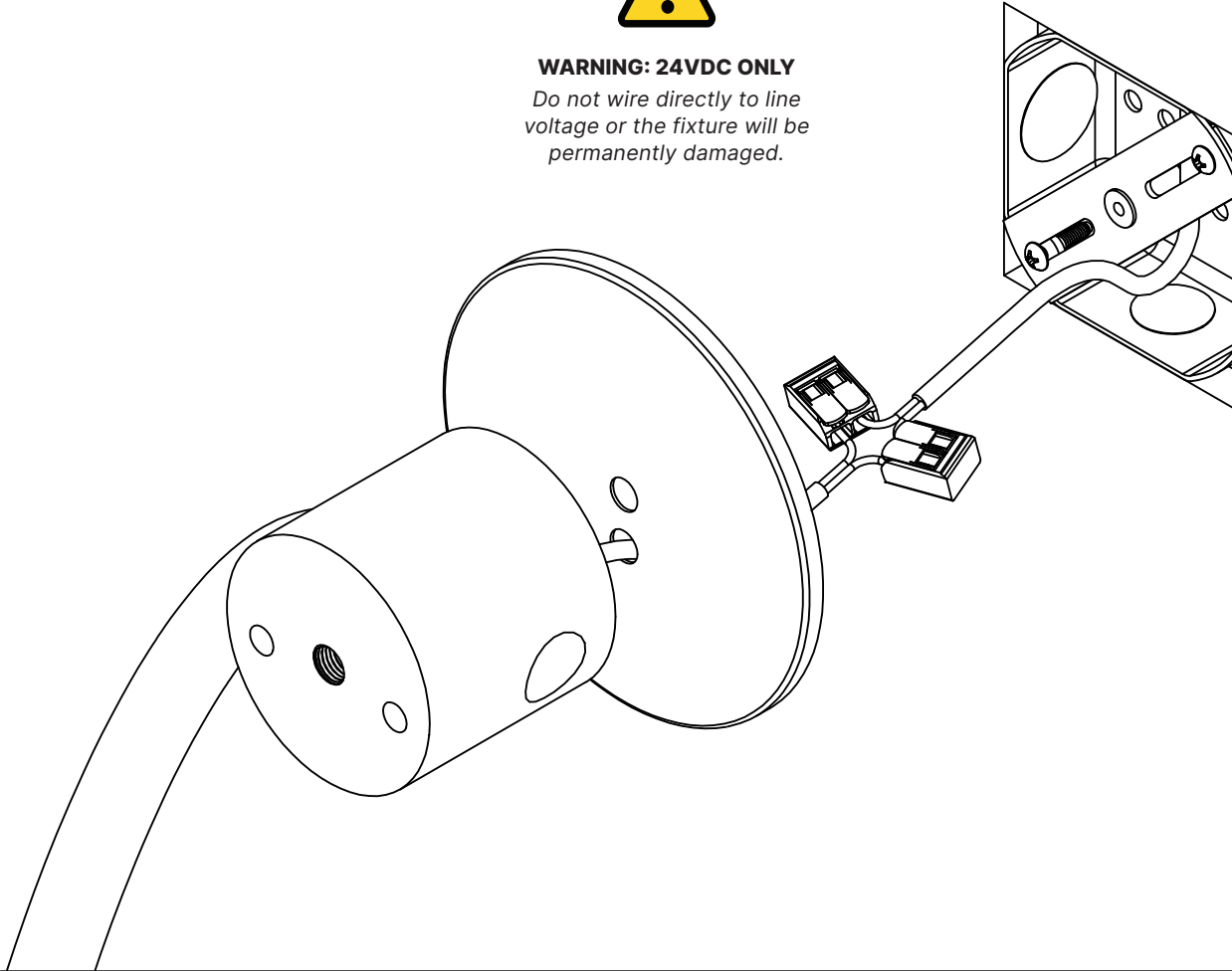


Shield Sconce 6.2 - Junction Box Mounting

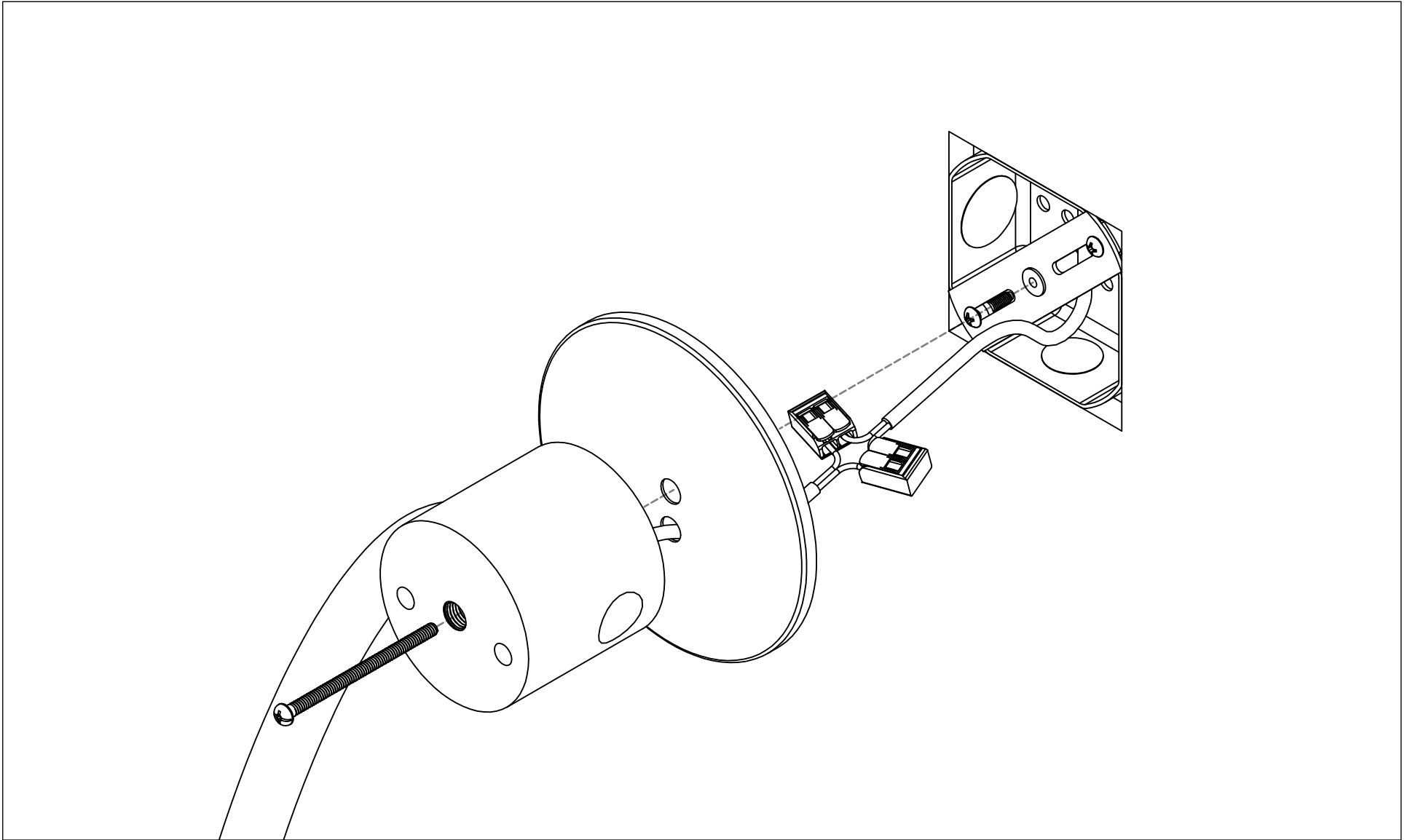


WARNING: 24VDC ONLY

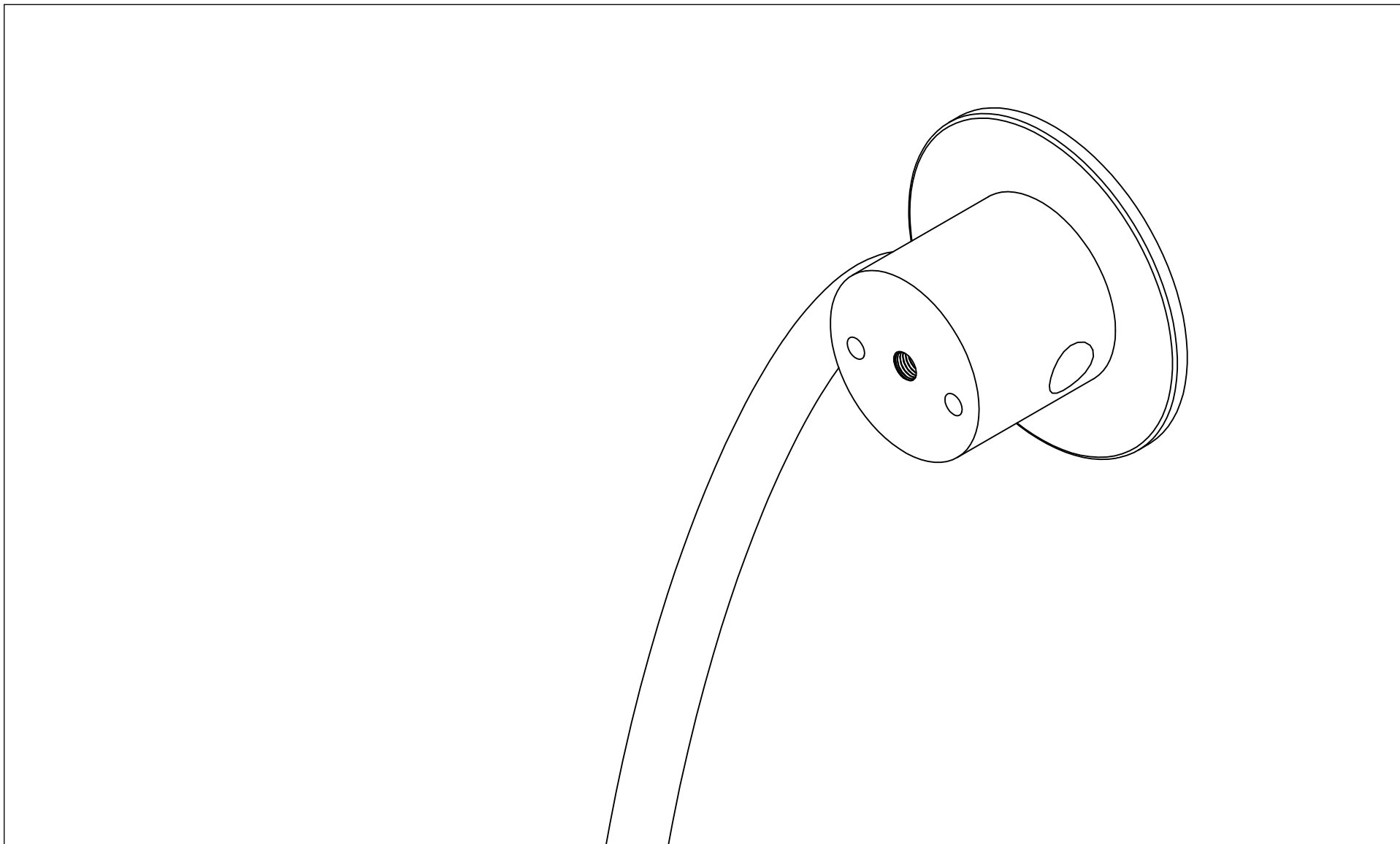
*Do not wire directly to line
voltage or the fixture will be
permanently damaged.*



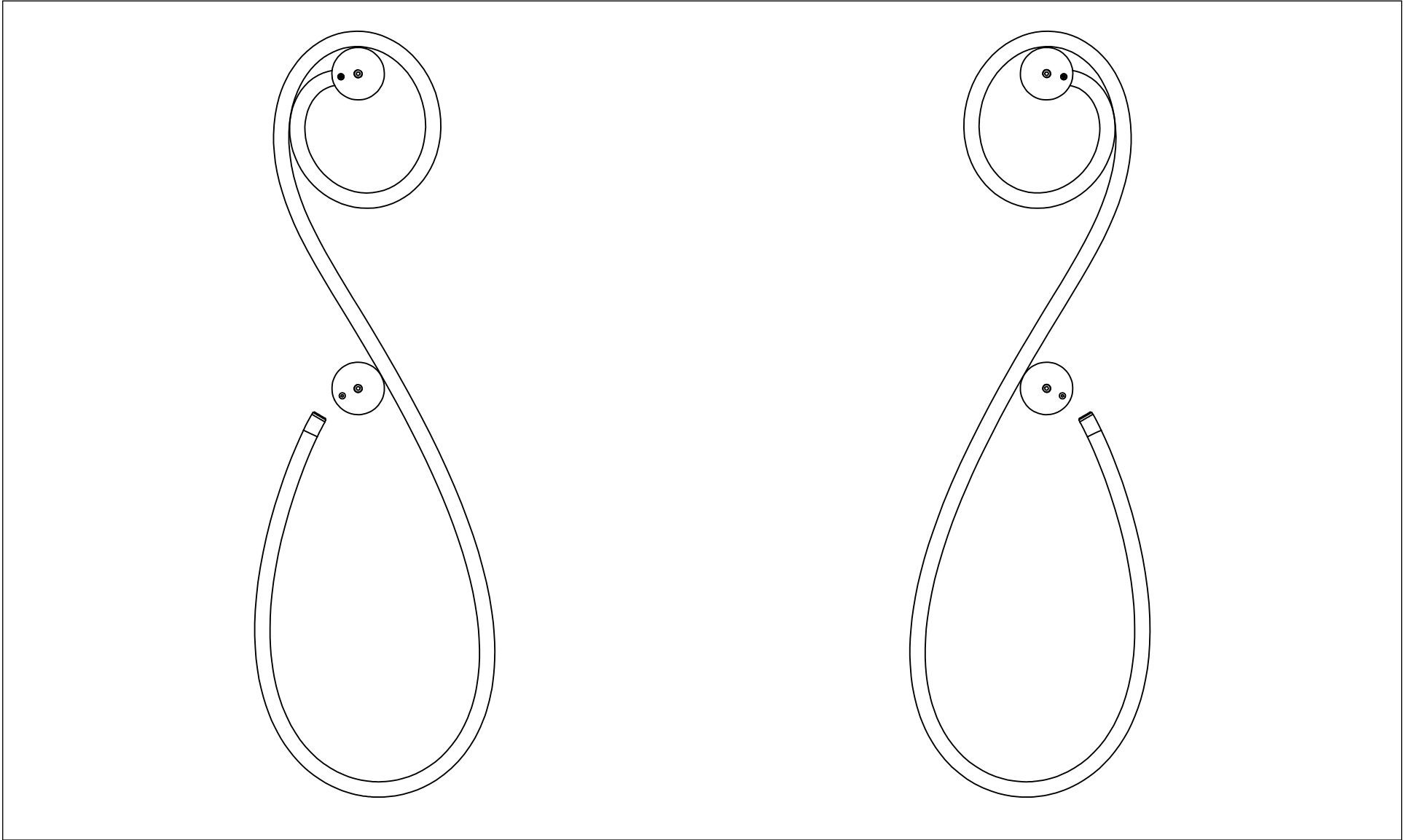
Shield Sconce 6.2 - Junction Box Mounting



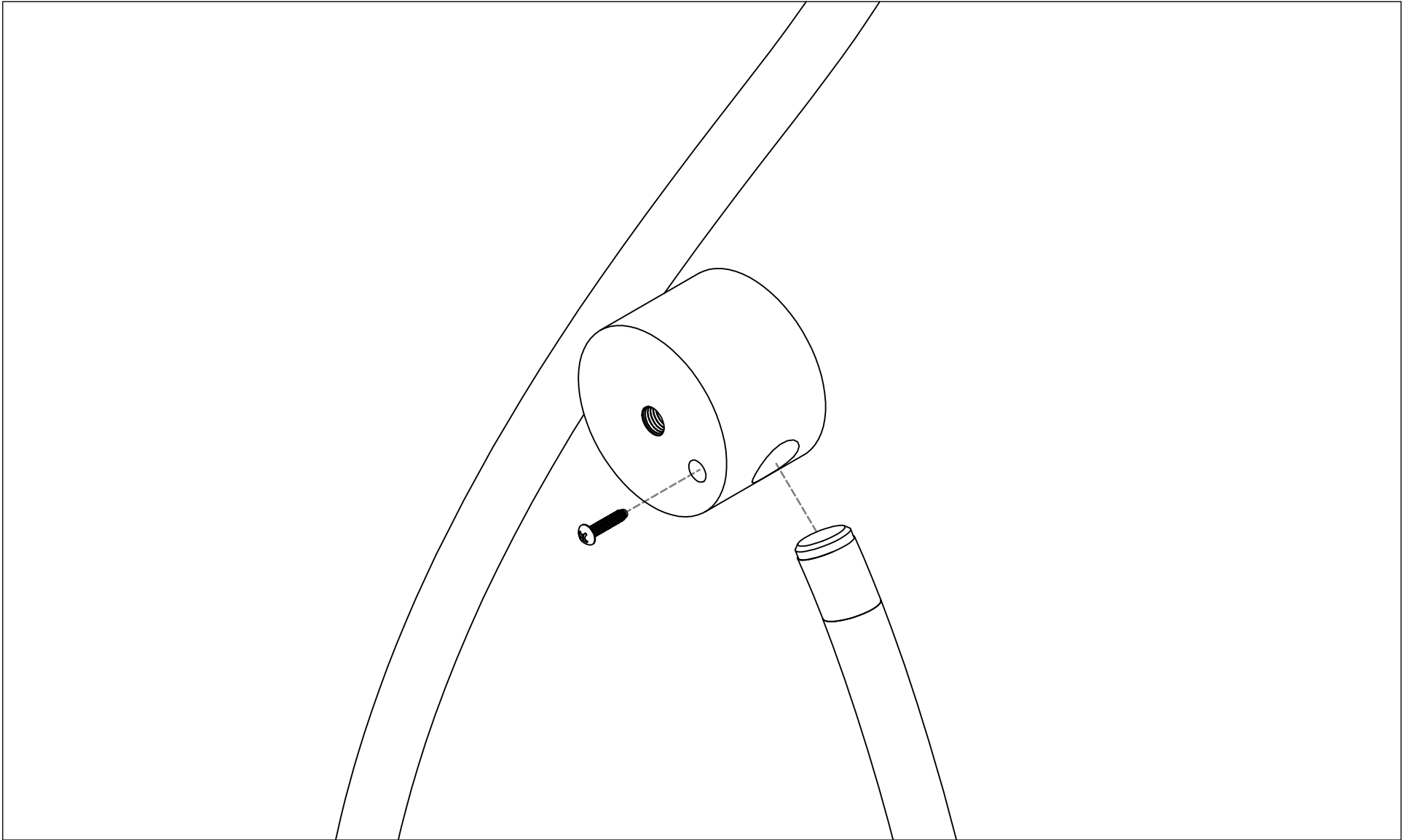
Shield Sconce 6.2 - Junction Box Mounting



Shield Sconce 6.2 - Junction Box Mounting



Shield Sconce 6.2 - Junction Box Mounting



Shield Sconce 6.2 - Junction Box Mounting

