



POWER REQUIREMENTS

5W @ 24VDC

One Class 2 LED driver required.

DO NOT CONNECT DIRECTLY TO LINE VOLTAGE!

MOUNTING

Fixture can be mounted directly to any type of wall.

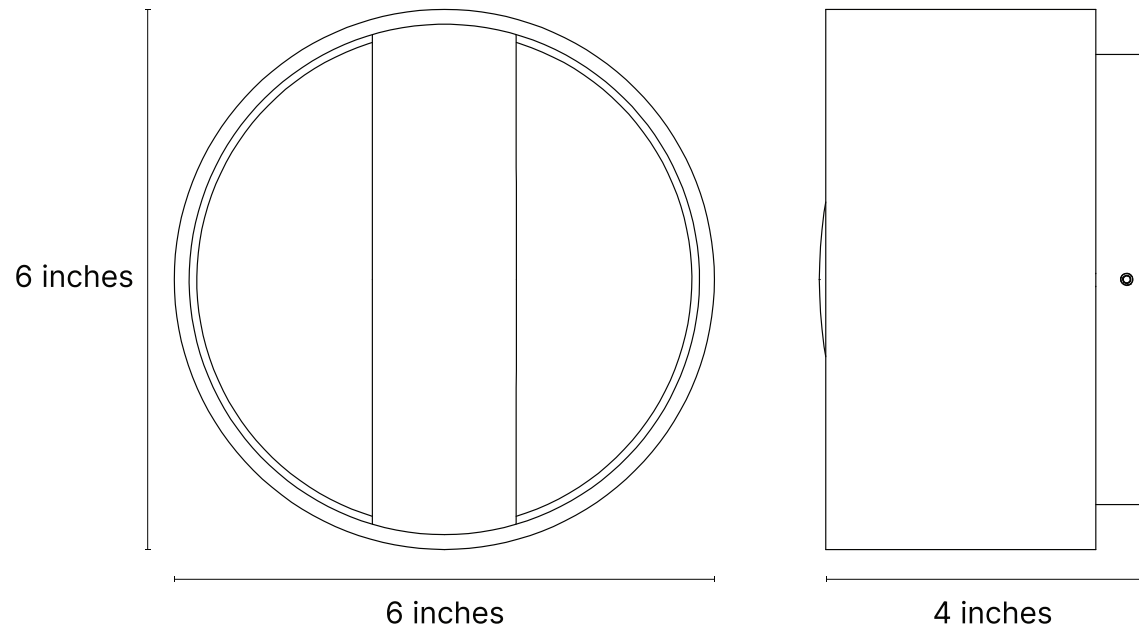
Junction box optional. Fixture weighs less than 4 pounds.

TECHNICAL SUPPORT

Scan the QR code to view the fixture in 3D!

Call us at the number below if you need help.





THIS IS A LOW VOLTAGE (24VDC) FIXTURE.

Do not wire this fixture directly to line voltage! This fixture requires a 24VDC Class 2 Transformer (LED Driver). The 24VDC driver must be mounted per the included manufacturer's instructions. Also, please ensure that the wiring system complies with NEC requirements.



PLEASE HANDLE WITH CARE.

Keep all protective sleeves in place until fixture installation is complete. Protect the rope from nearby paint and construction dust. Keep the entire fixture covered until all nearby work is completed. Failure to handle components with care may result in permanent damage.

CONTACT US WITH ANY QUESTIONS!

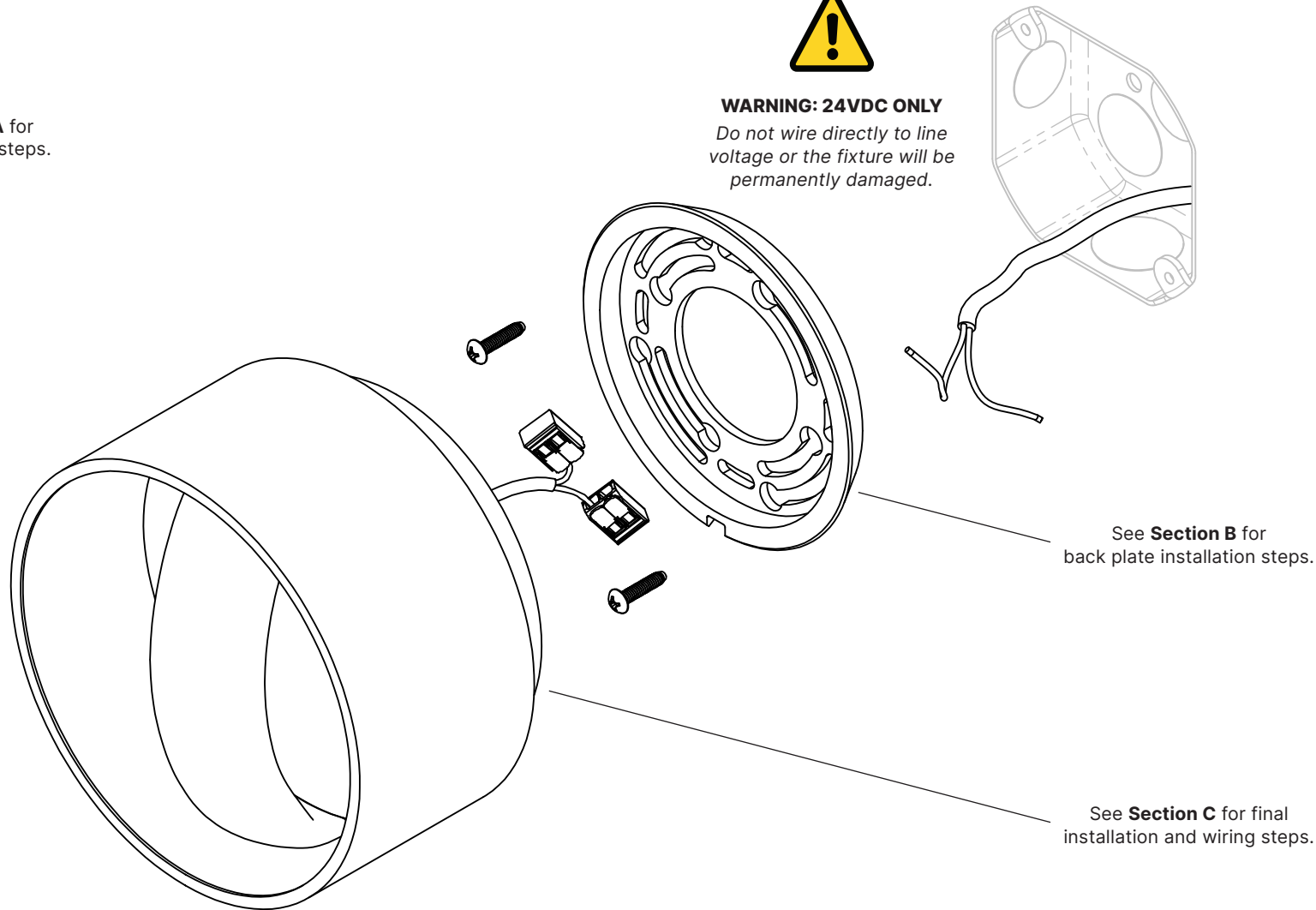
Technical Support: (914) 294-2024 ext. 2

(914) 294-2024
WWW.LUKELAMPCO.COM
INFO@LUKELAMPCO.COM

See **Section A** for
pre-installation steps.

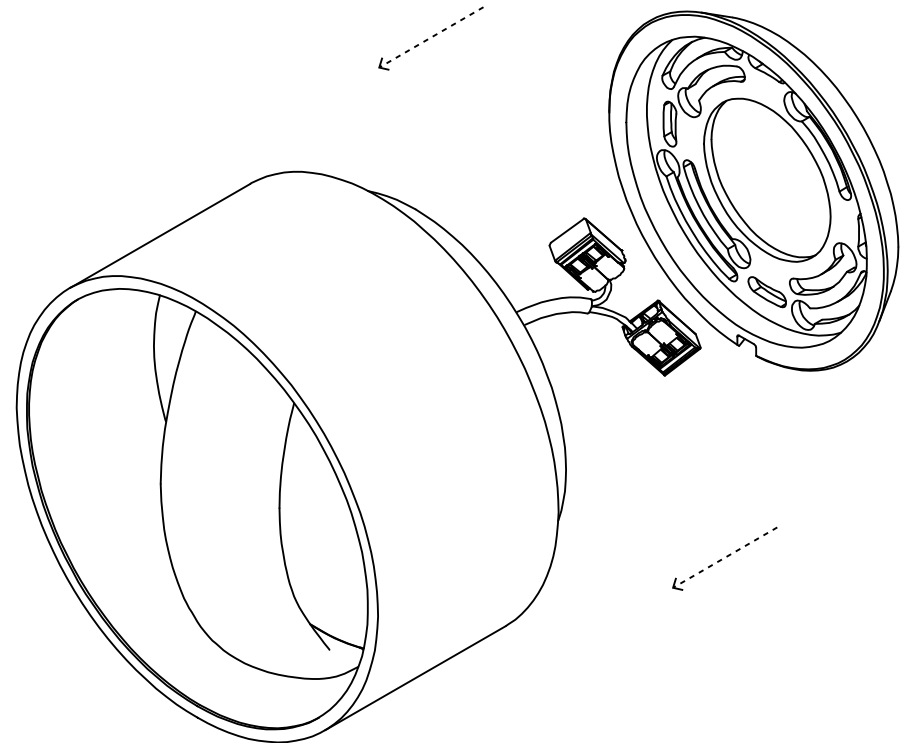
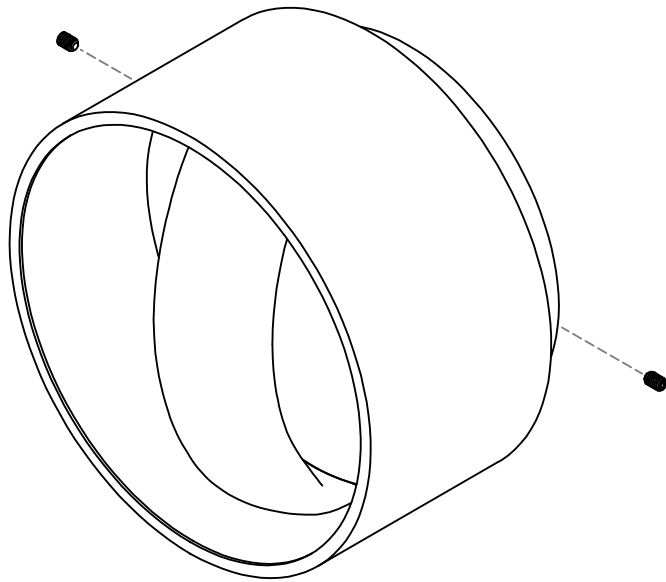


WARNING: 24VDC ONLY
*Do not wire directly to line
voltage or the fixture will be
permanently damaged.*



CONTACT US WITH ANY QUESTIONS!
Technical Support: (914) 294-2024 ext. 2

(914) 294-2024
WWW.LUKELAMPCO.COM
INFO@LUKELAMPCO.COM



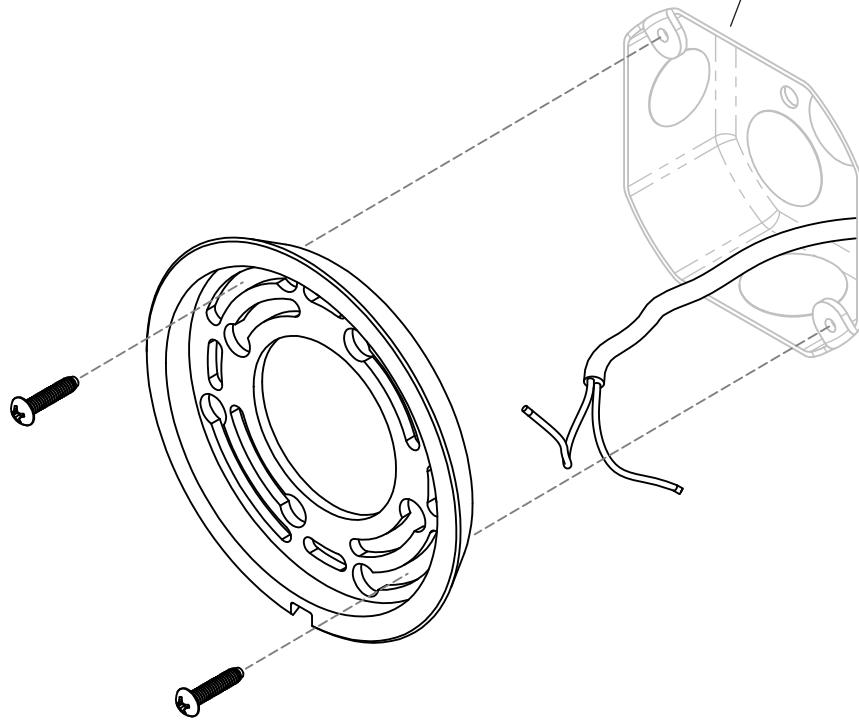
CONTACT US WITH ANY QUESTIONS!

Technical Support: (914) 294-2024 ext. 2

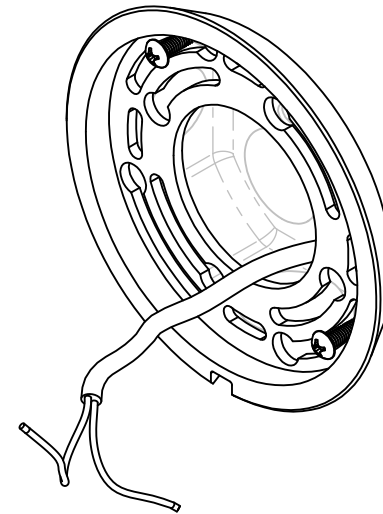
(914) 294-2024
WWW.LUKELAMPCO.COM
INFO@LUKELAMPCO.COM

Section B: Back Plate Installation

Junction Box
is optional.

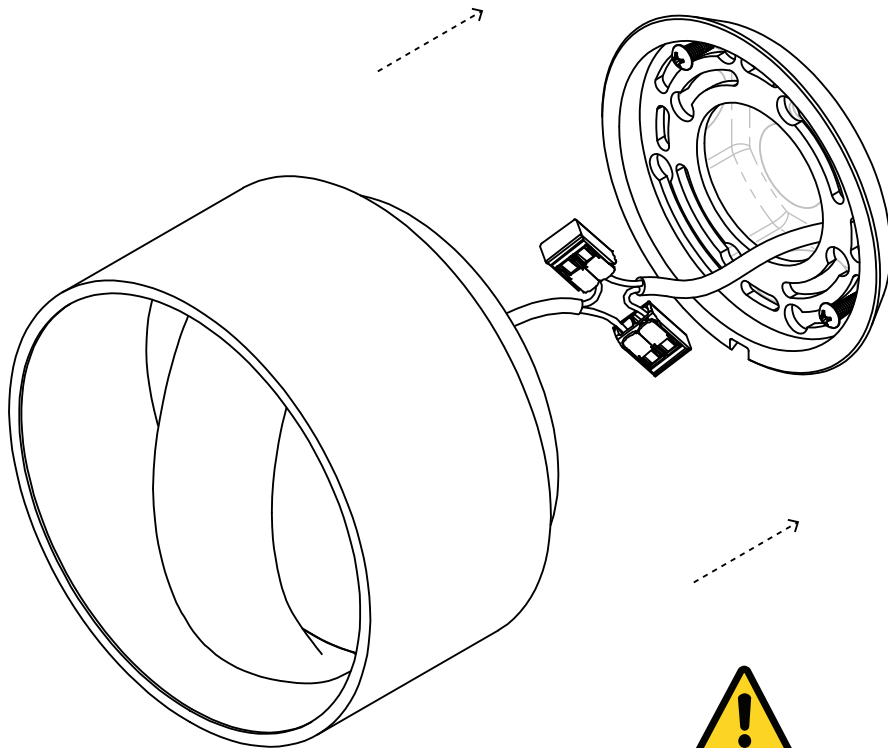


WARNING: 24VDC ONLY
*Do not wire directly to line
voltage or the fixture will be
permanently damaged.*



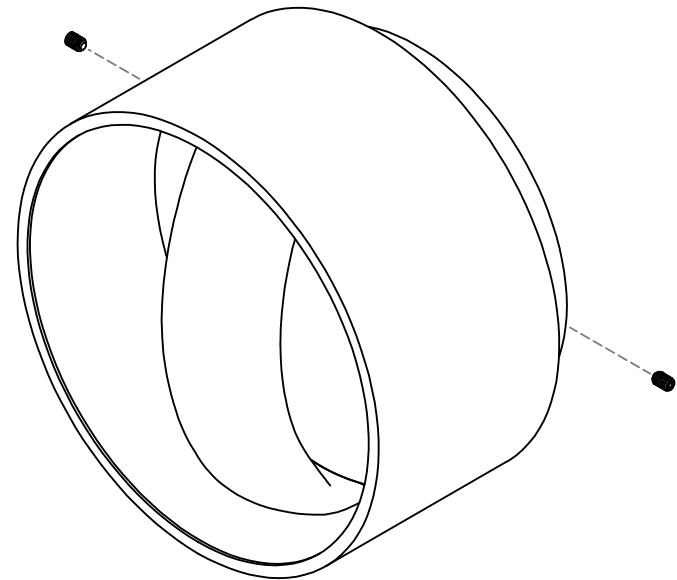
CONTACT US WITH ANY QUESTIONS!
Technical Support: (914) 294-2024 ext. 2

(914) 294-2024
WWW.LUKELAMPCO.COM
INFO@LUKELAMPCO.COM



WARNING: 24VDC ONLY

*Do not wire directly to line
voltage or the fixture will be
permanently damaged.*



CONTACT US WITH ANY QUESTIONS!

Technical Support: (914) 294-2024 ext. 2

(914) 294-2024
WWW.LUKELAMPCO.COM
INFO@LUKELAMPCO.COM