

**POWER REQUIREMENTS**

155W @ 24VDC  
Two Class 2 LED drivers required.  
DO NOT CONNECT DIRECTLY TO LINE VOLTAGE!

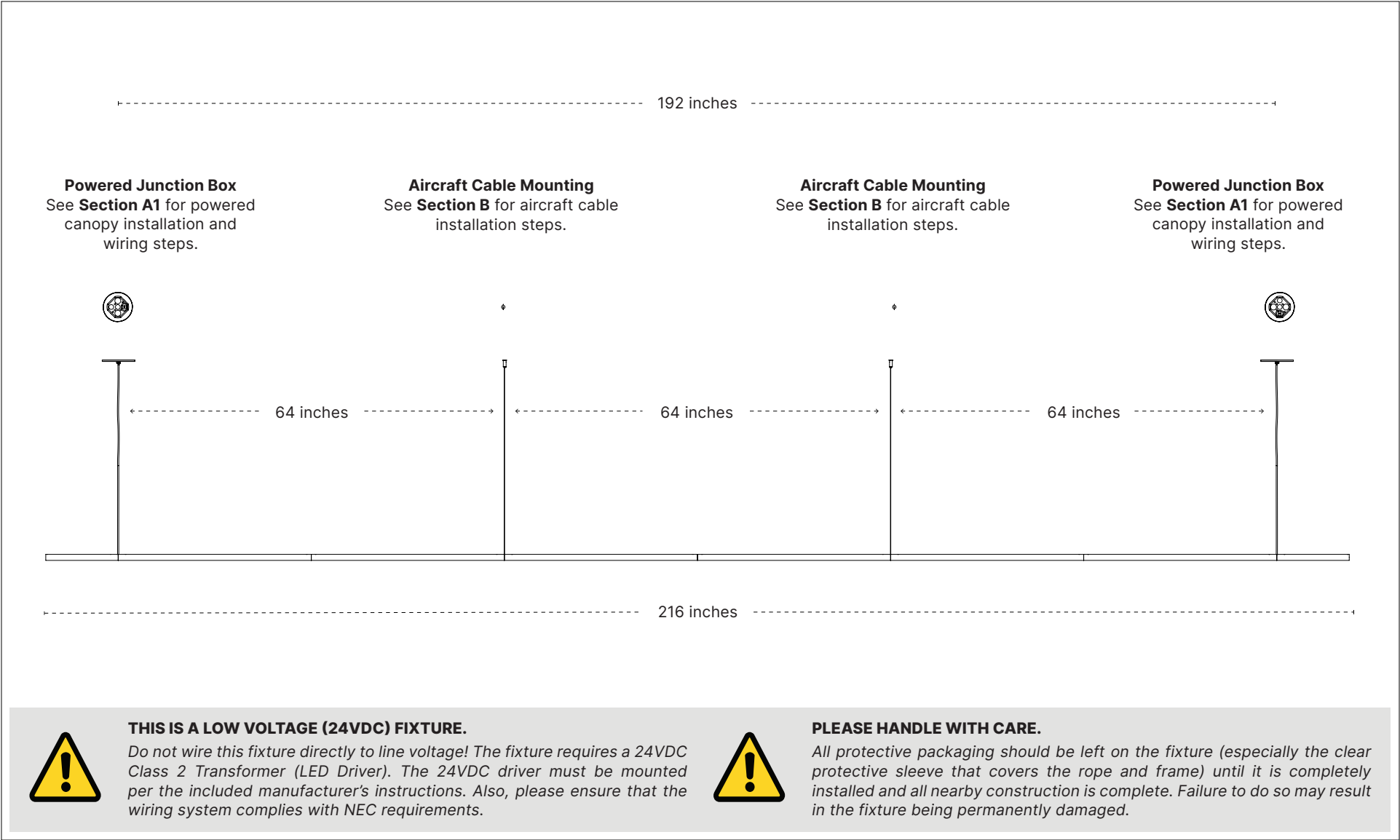
**MOUNTING**

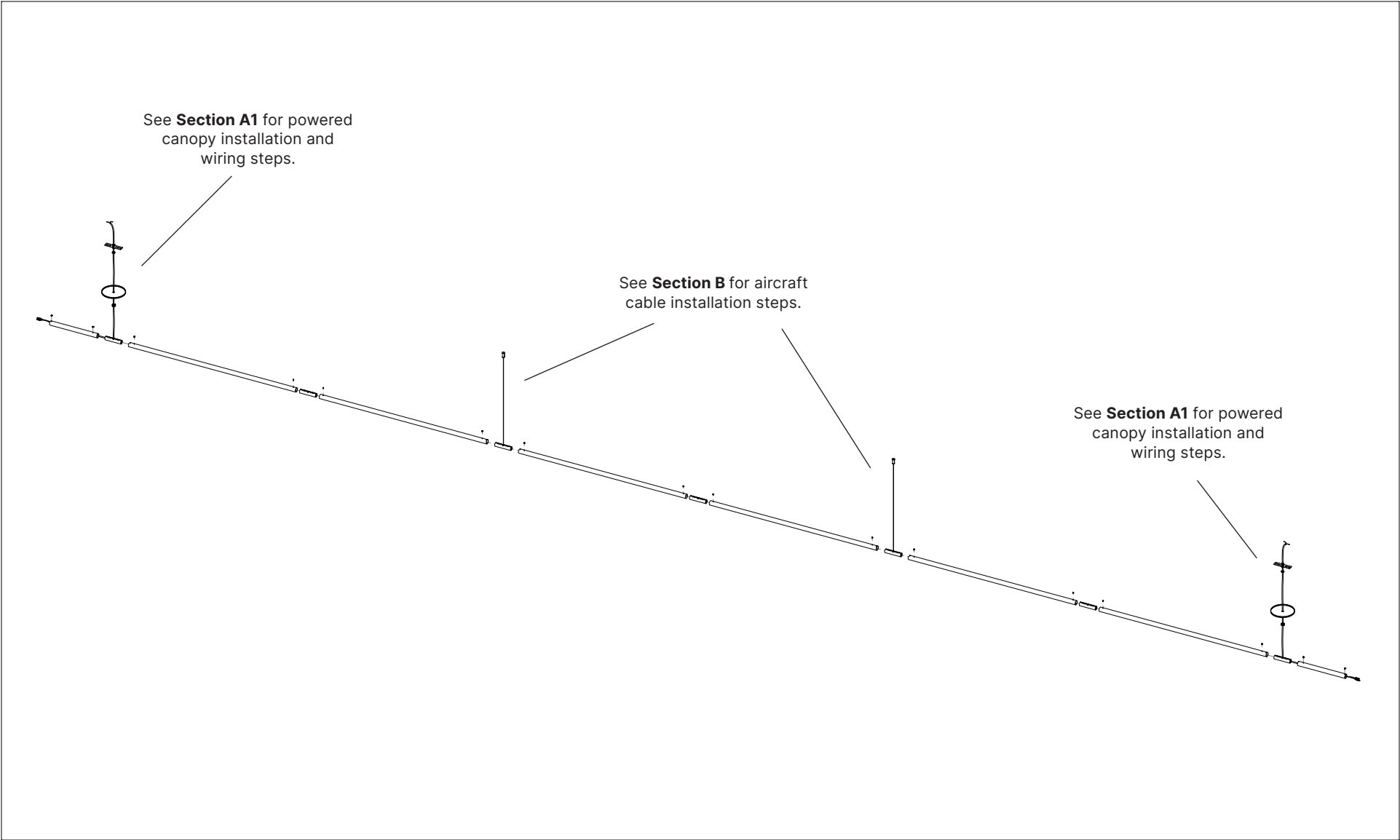
Two junction boxes (192" on center) with two central aircraft cables for additional support. Both junction boxes require power. Two remotely mounted 24VDC drivers required. Fixture weighs less than 31 pounds.

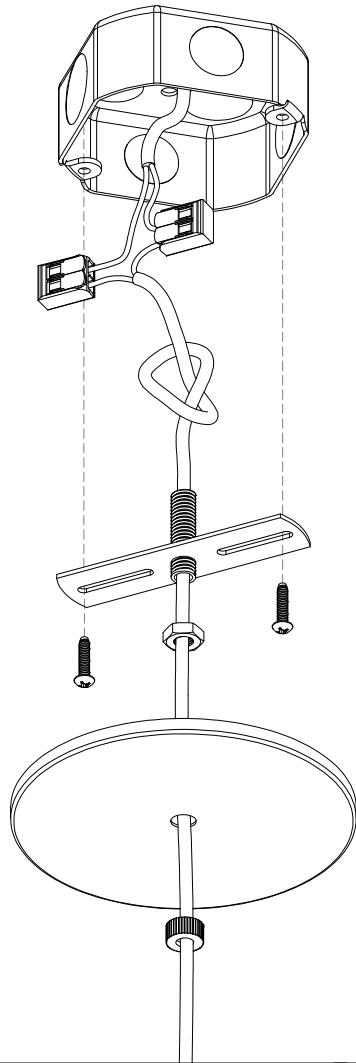
**TECHNICAL SUPPORT**

Need help styling the rope?  
Scan the QR code to view the fixture in 3D!  
Call us at the number below if you need help.

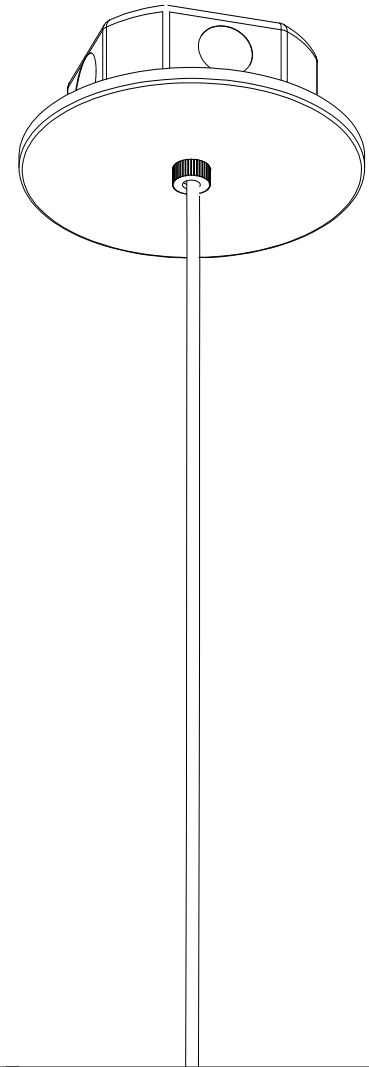


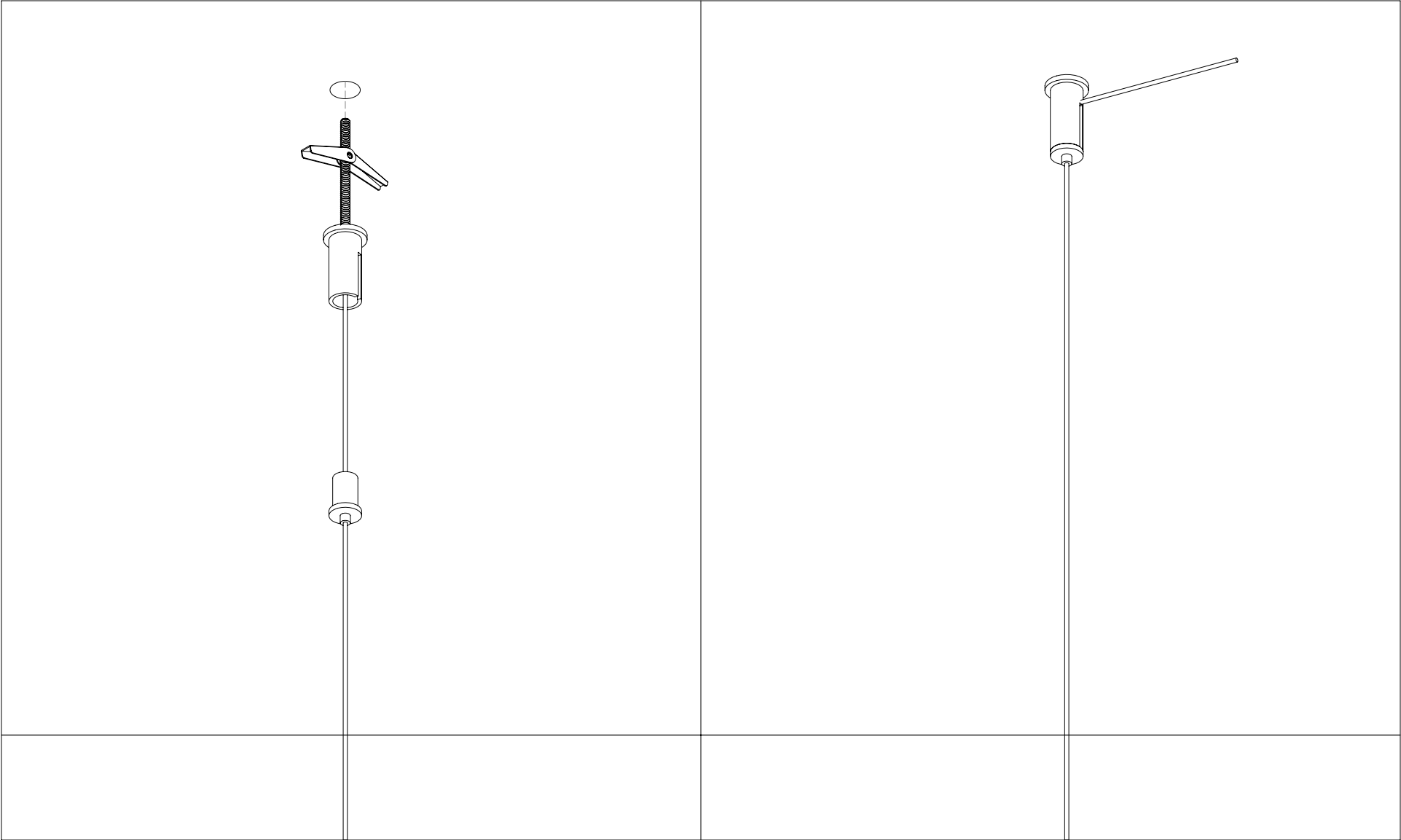






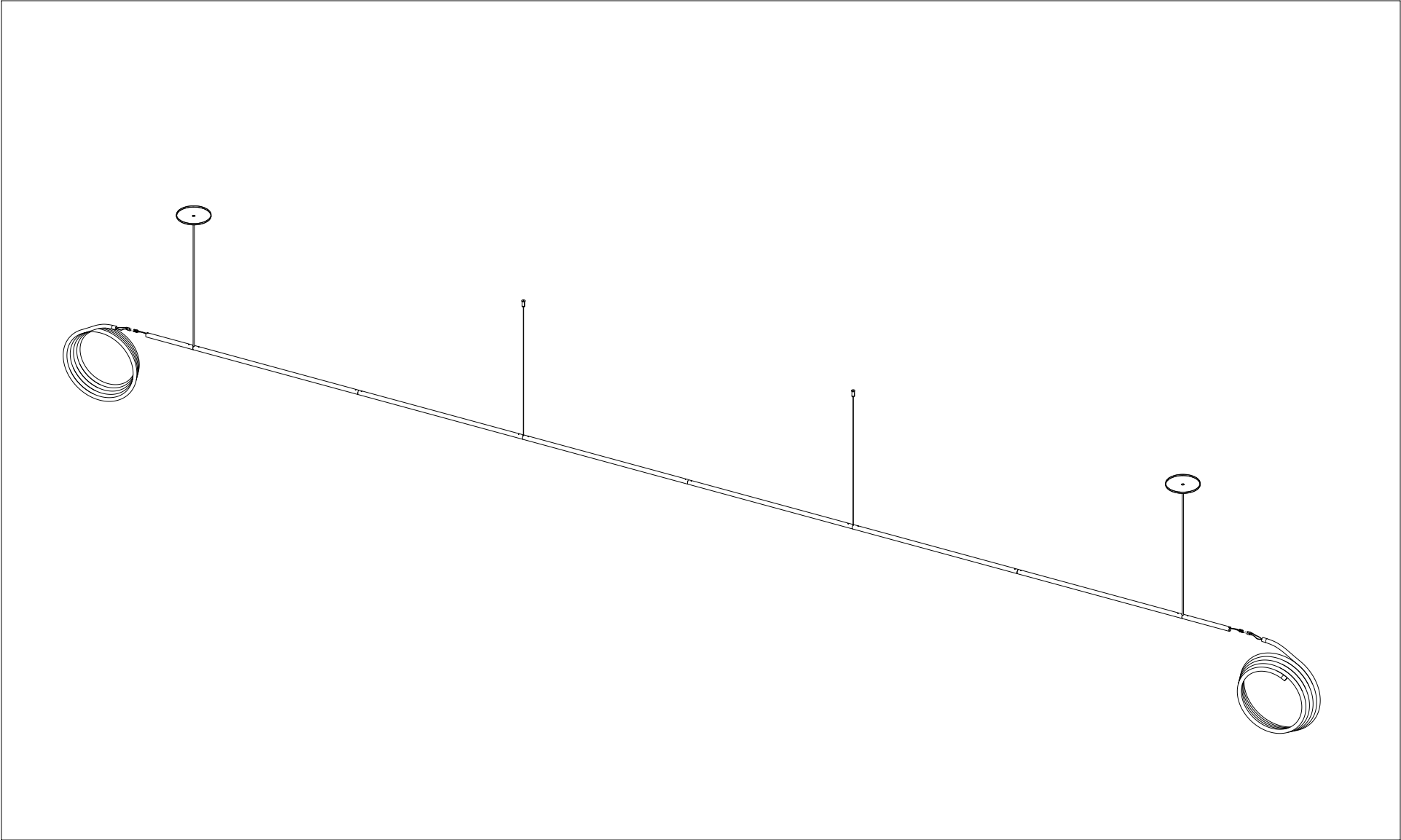
**WARNING: 24VDC ONLY**  
*Do not wire directly to line  
voltage or the fixture will be  
permanently damaged.*





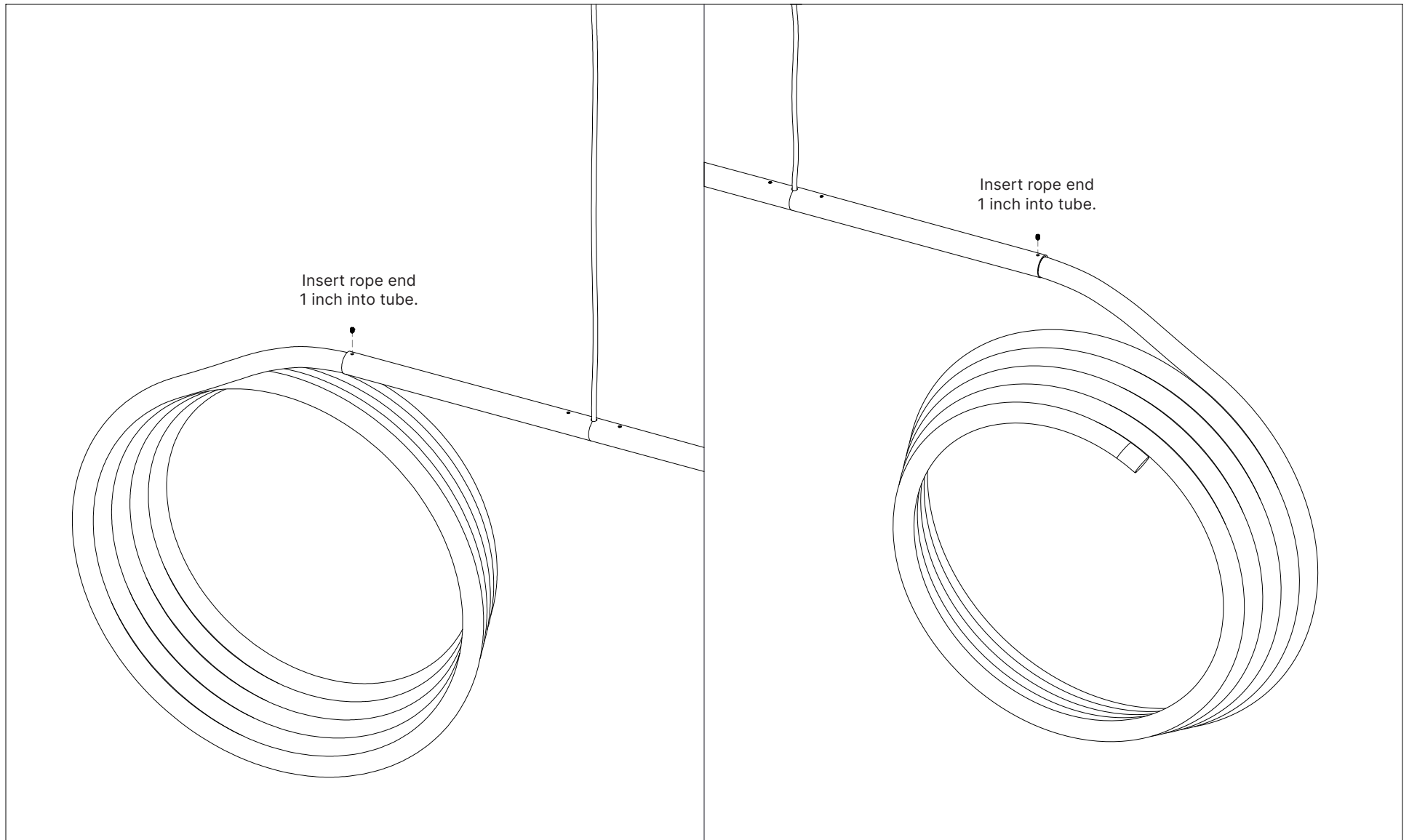
**CONTACT US WITH ANY QUESTIONS!**  
Technical Support: (914) 294-2024 ext. 2

(914) 294-2024  
[WWW.LUKELAMPCO.COM](http://WWW.LUKELAMPCO.COM)  
[INFO@LUKELAMPCO.COM](mailto:INFO@LUKELAMPCO.COM)



**CONTACT US WITH ANY QUESTIONS!**  
Technical Support: (914) 294-2024 ext. 2

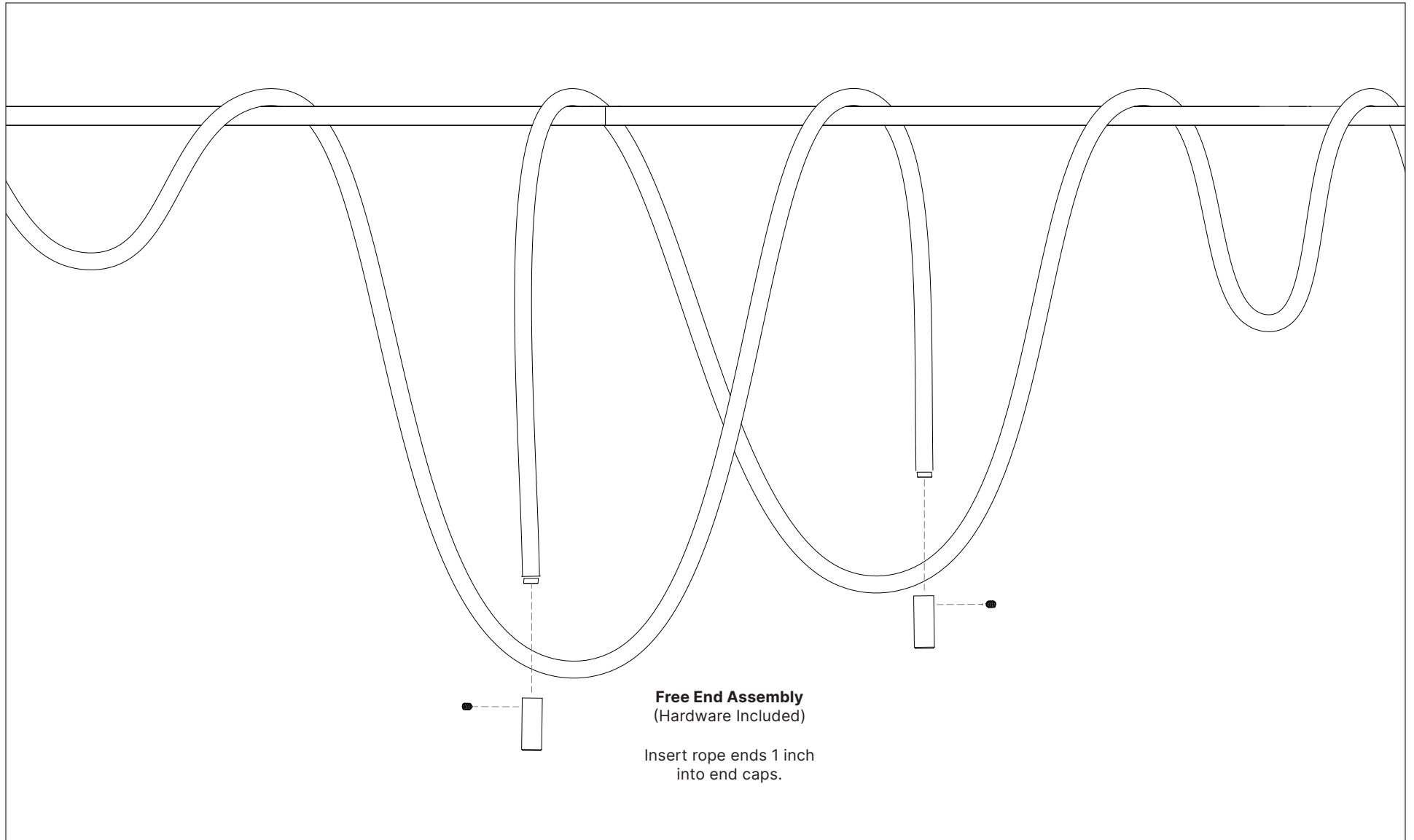
(914) 294-2024  
[WWW.LUKELAMPCO.COM](http://WWW.LUKELAMPCO.COM)  
[INFO@LUKELAMPCO.COM](mailto:INFO@LUKELAMPCO.COM)



**CONTACT US WITH ANY QUESTIONS!**

Technical Support: (914) 294-2024 ext. 2

(914) 294-2024  
[WWW.LUKELAMPCO.COM](http://WWW.LUKELAMPCO.COM)  
[INFO@LUKELAMPCO.COM](mailto:INFO@LUKELAMPCO.COM)



**CONTACT US WITH ANY QUESTIONS!**

Technical Support: (914) 294-2024 ext. 2

(914) 294-2024  
WWW.LUKELAMPCO.COM  
INFO@LUKELAMPCO.COM



