

POWER REQUIREMENTS

149W @ 24VDC

Two Class 2 LED drivers required.

DO NOT CONNECT DIRECTLY TO LINE VOLTAGE!

MOUNTING

Two junction boxes (168" on center) with a central aircraft cable for additional support. Both junction boxes require power. Two remotely mounted 24VDC drivers required. Fixture weighs less than 26 pounds.

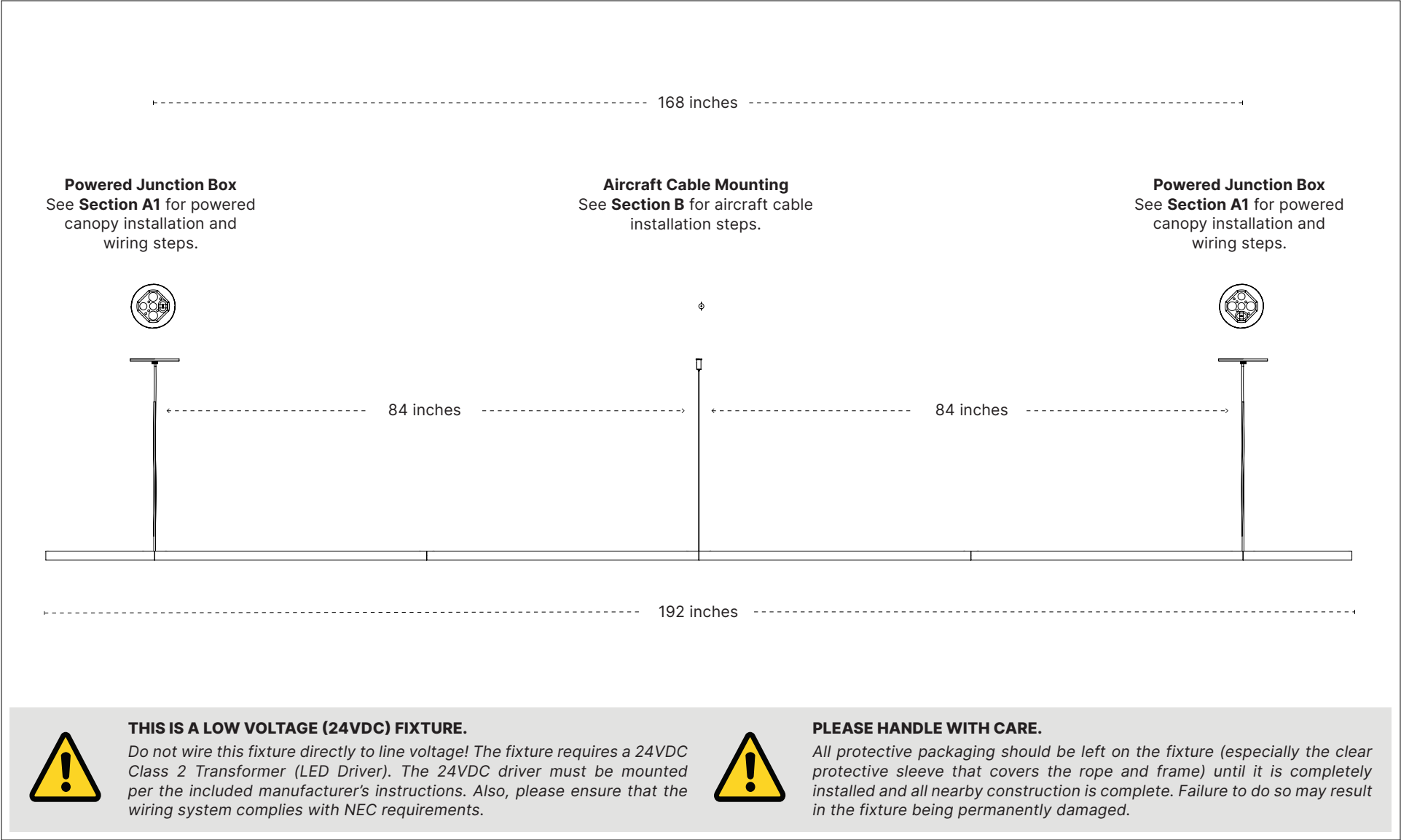
TECHNICAL SUPPORT

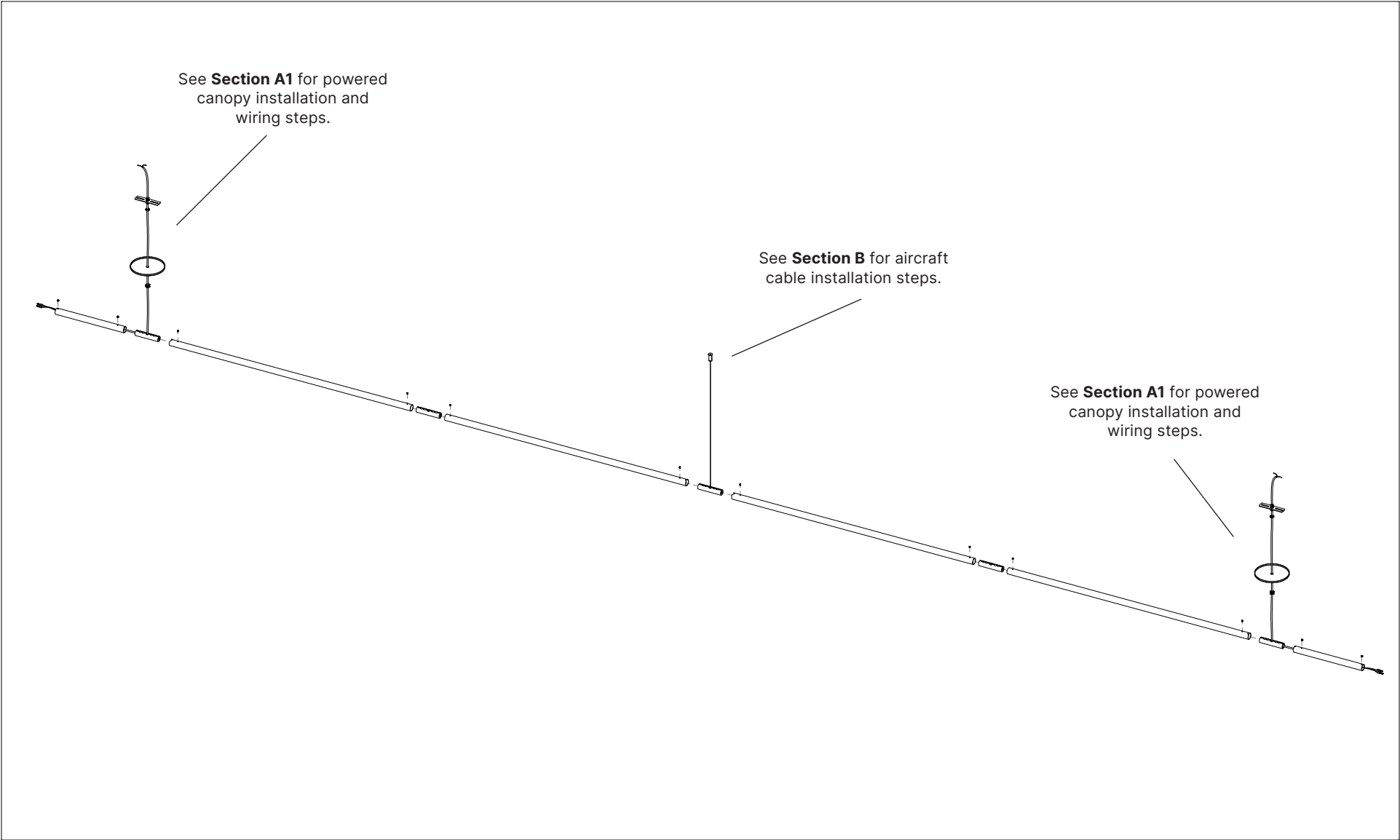
Need help styling the rope?

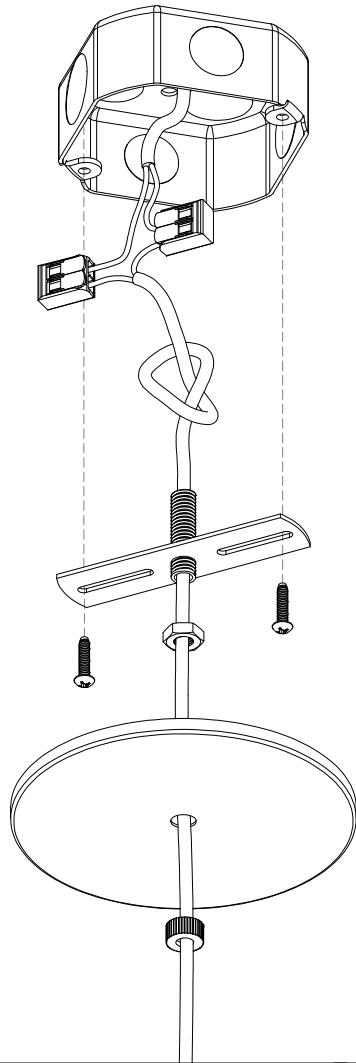
Scan the QR code to view the fixture in 3D!

Call us at the number below if you need help.

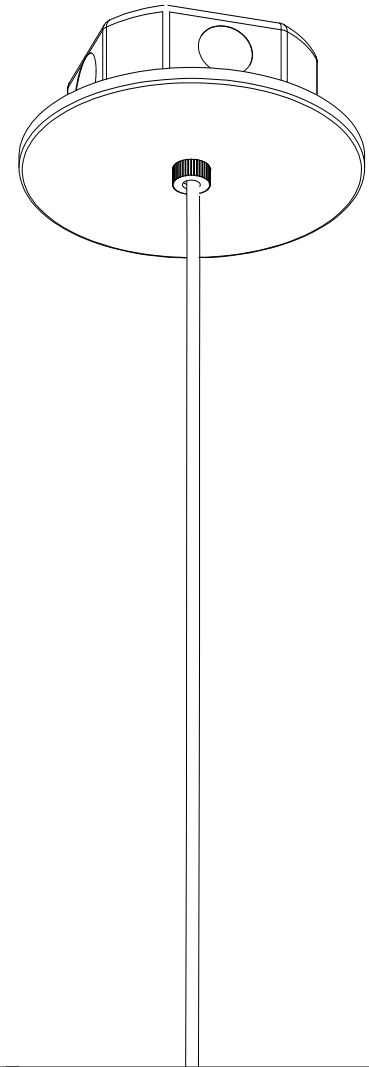


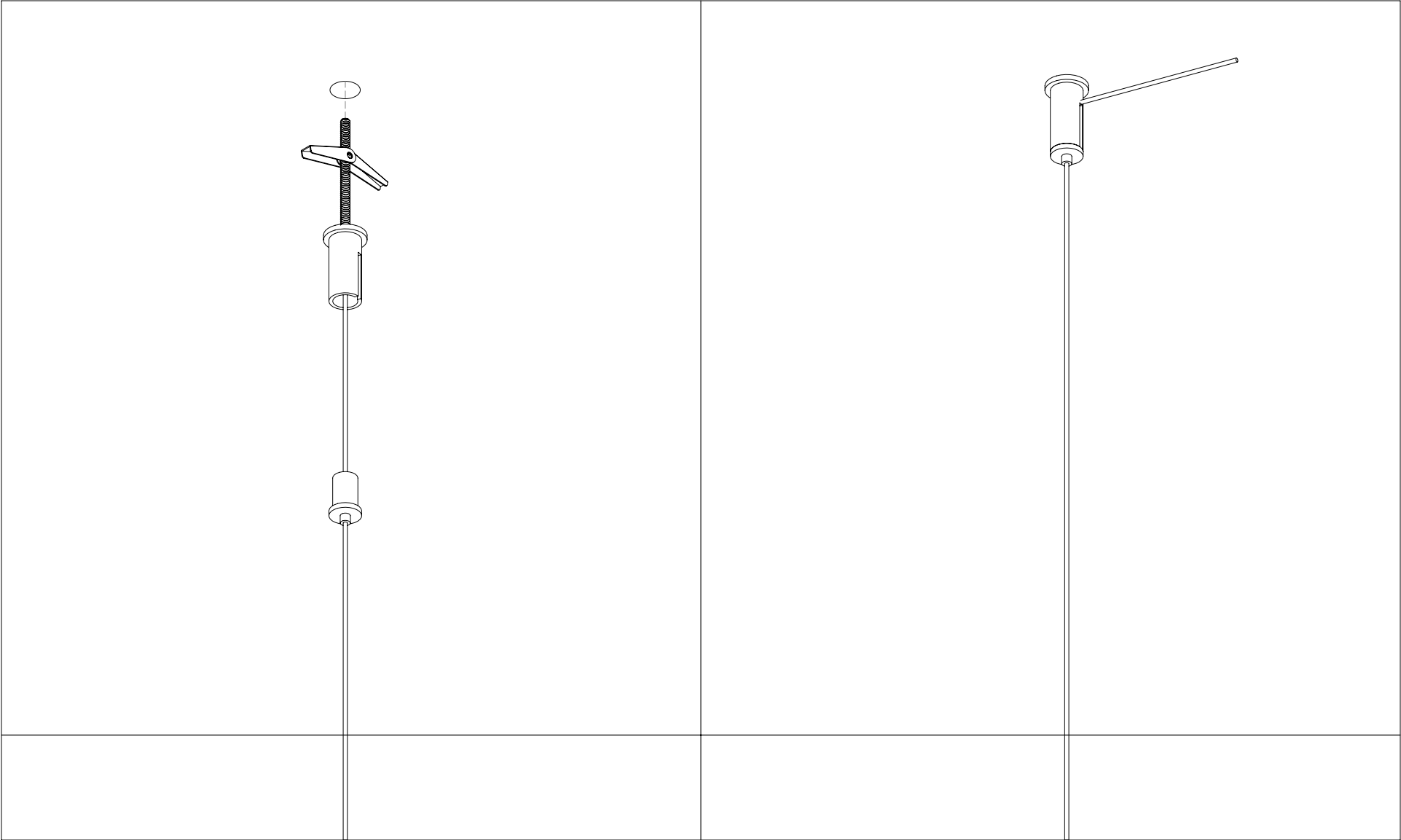






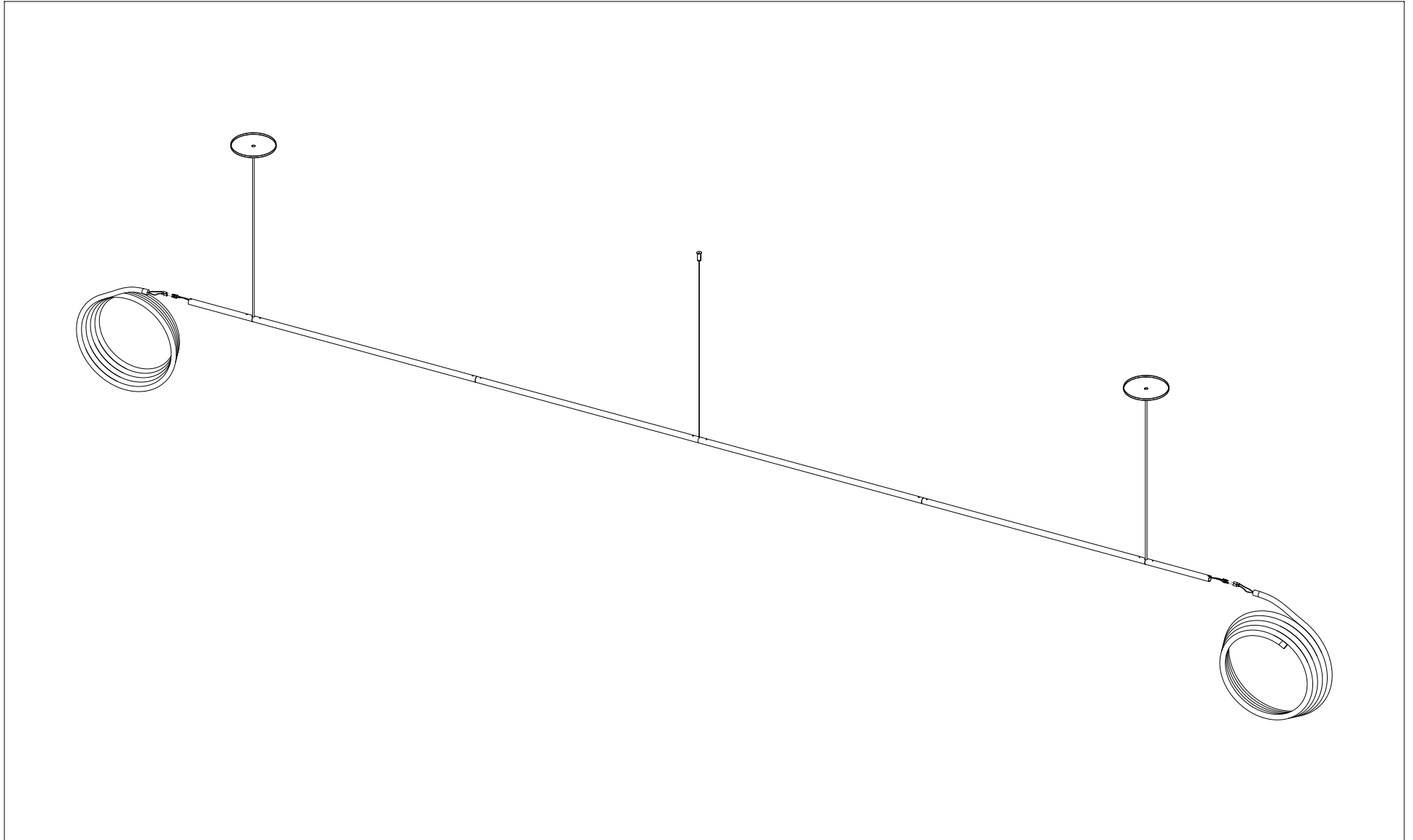
WARNING: 24VDC ONLY
*Do not wire directly to line
voltage or the fixture will be
permanently damaged.*





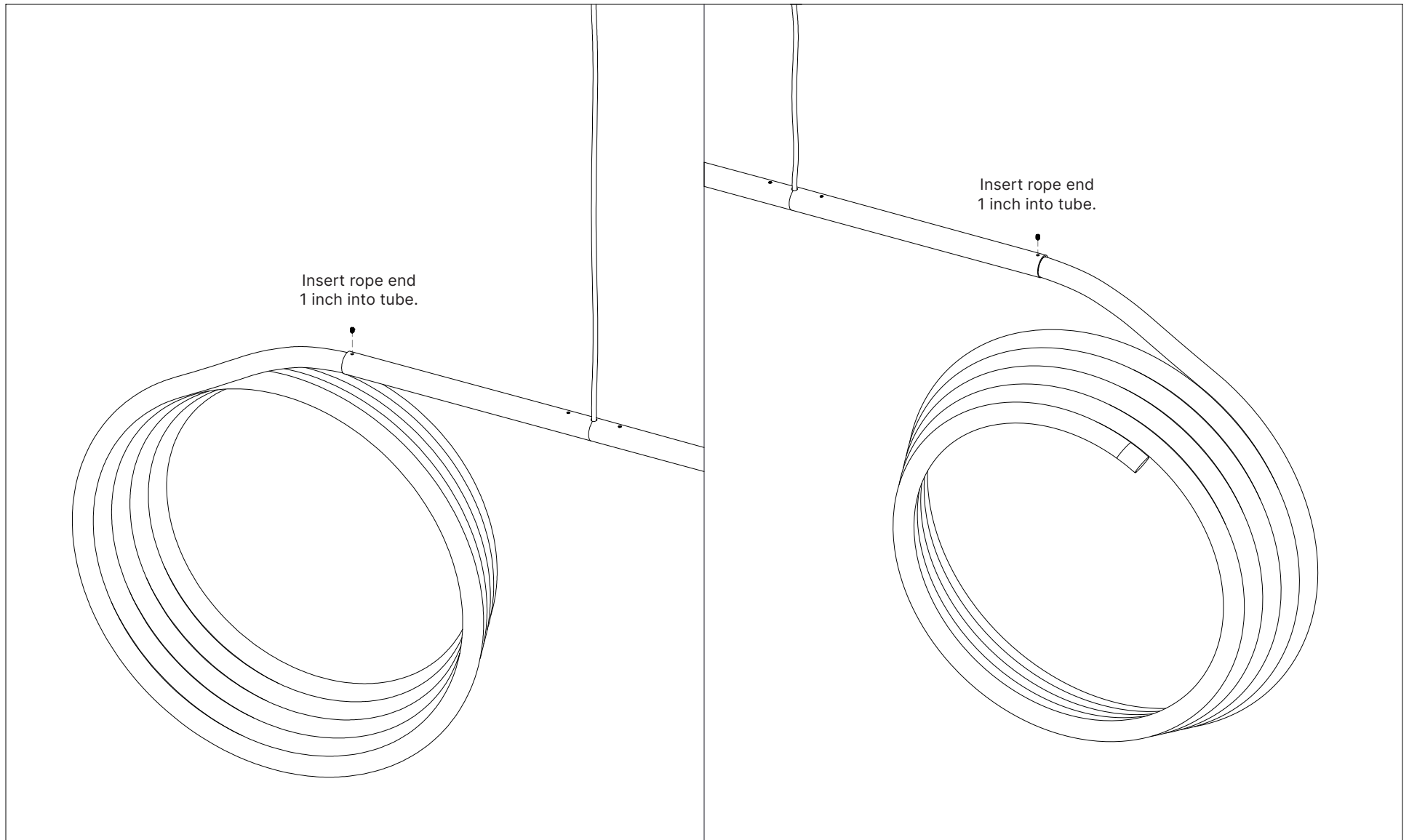
CONTACT US WITH ANY QUESTIONS!
Technical Support: (914) 294-2024 ext. 2

(914) 294-2024
WWW.LUKELAMPCO.COM
INFO@LUKELAMPCO.COM



CONTACT US WITH ANY QUESTIONS!
Technical Support: (914) 294-2024 ext. 2

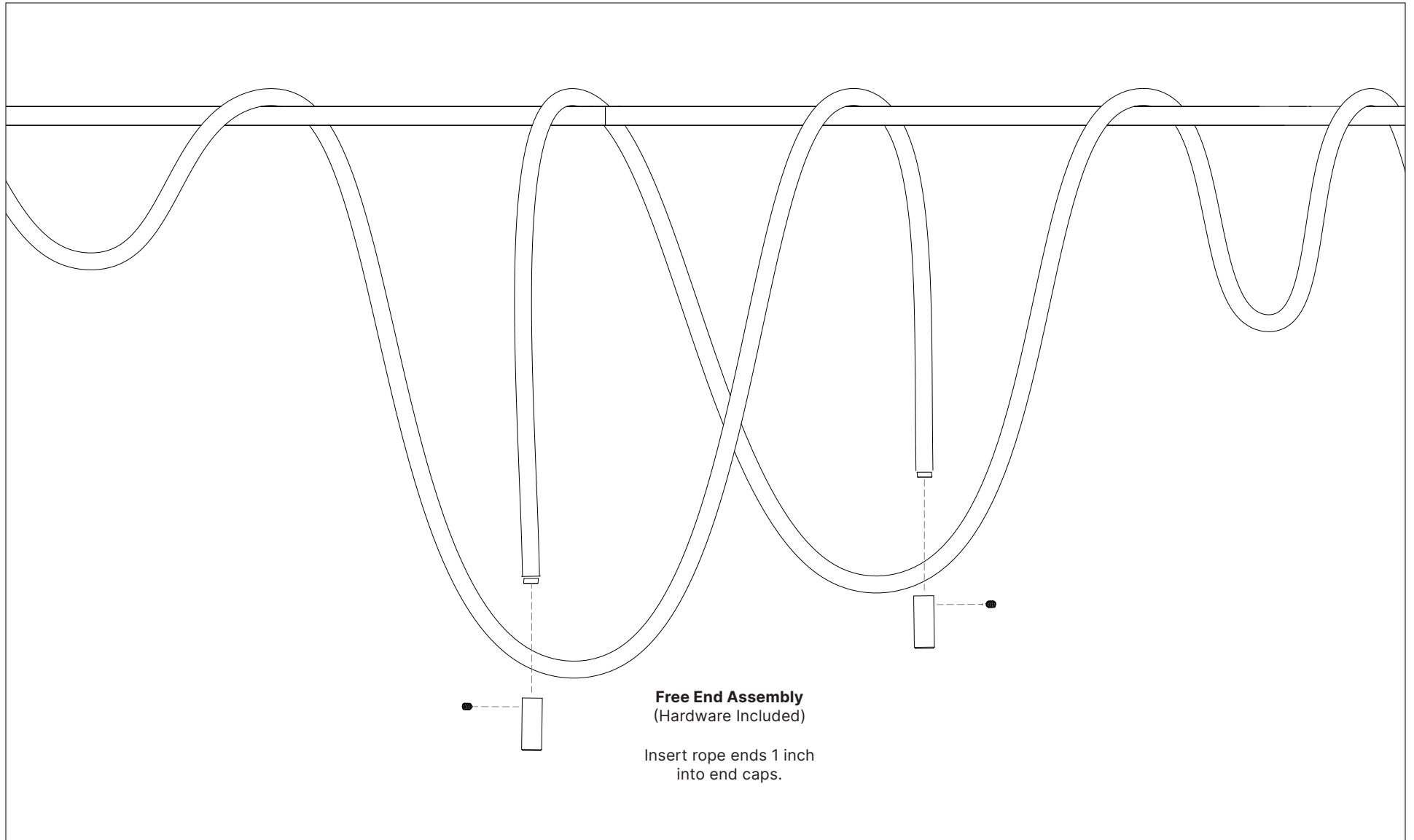
(914) 294-2024
WWW.LUKELAMPCO.COM
INFO@LUKELAMPCO.COM



CONTACT US WITH ANY QUESTIONS!

Technical Support: (914) 294-2024 ext. 2

(914) 294-2024
WWW.LUKELAMPCO.COM
INFO@LUKELAMPCO.COM



CONTACT US WITH ANY QUESTIONS!

Technical Support: (914) 294-2024 ext. 2

(914) 294-2024
WWW.LUKELAMPCO.COM
INFO@LUKELAMPCO.COM

