

POWER REQUIREMENTS

93W @ 24VDC
One Class 2 LED driver required.
DO NOT CONNECT DIRECTLY TO LINE VOLTAGE!

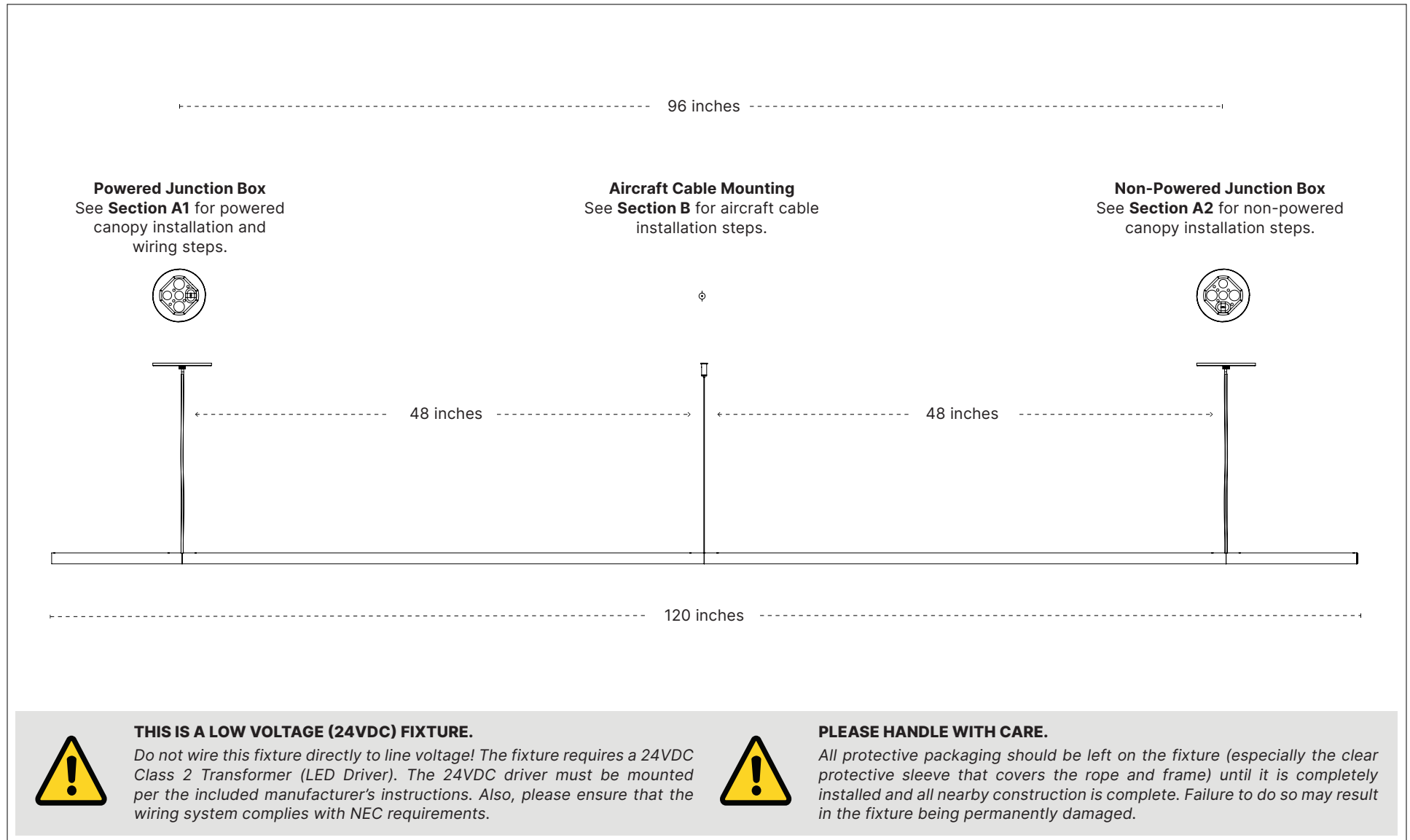
MOUNTING

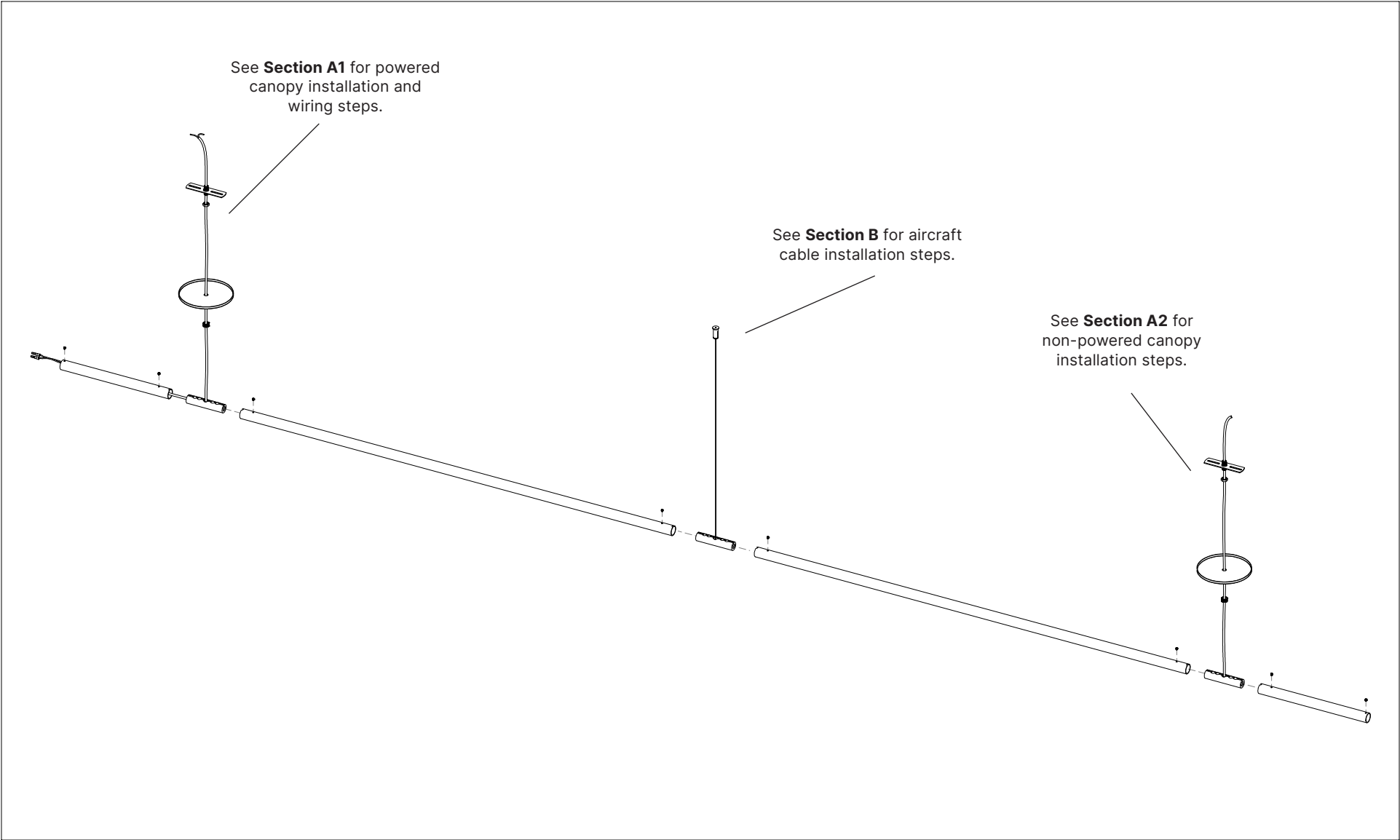
Two junction boxes (96" on center) with a central aircraft cable for additional support. One junction box requires power. One remotely mounted 24VDC driver required. Fixture weighs less than 20 pounds.

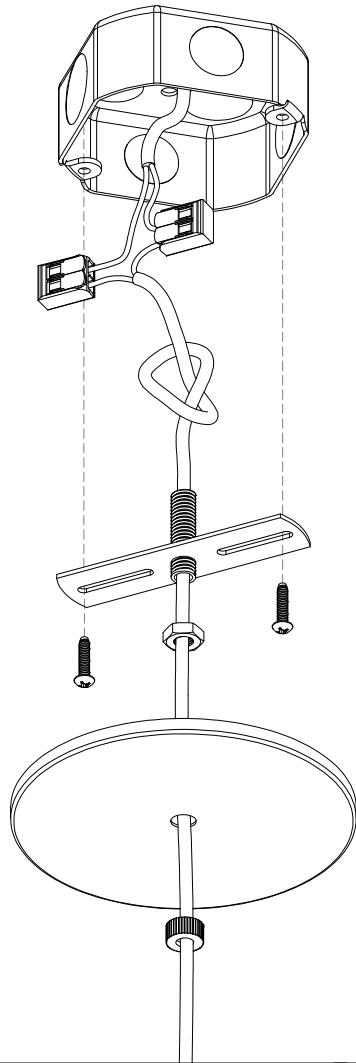
TECHNICAL SUPPORT

Need help styling the rope?
Scan the QR code to view the fixture in 3D!
Call us at the number below if you need help.

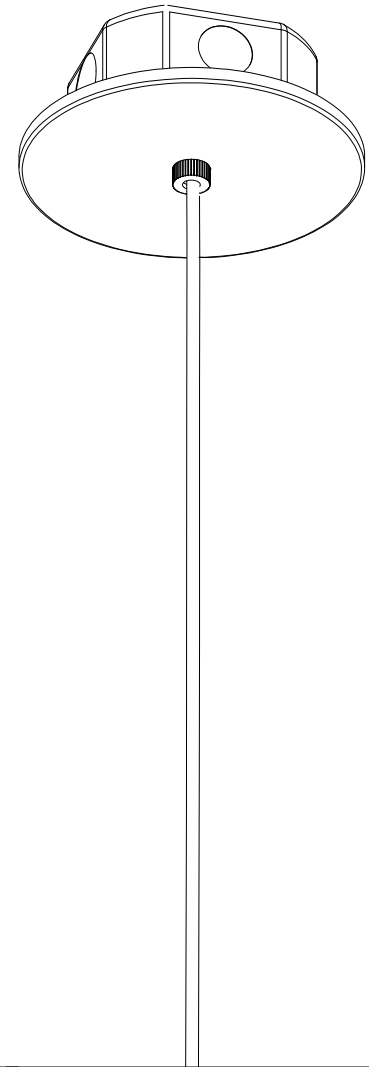
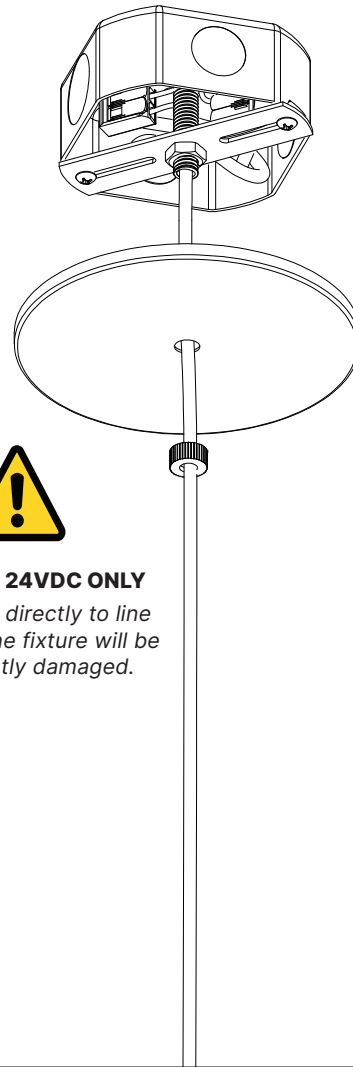


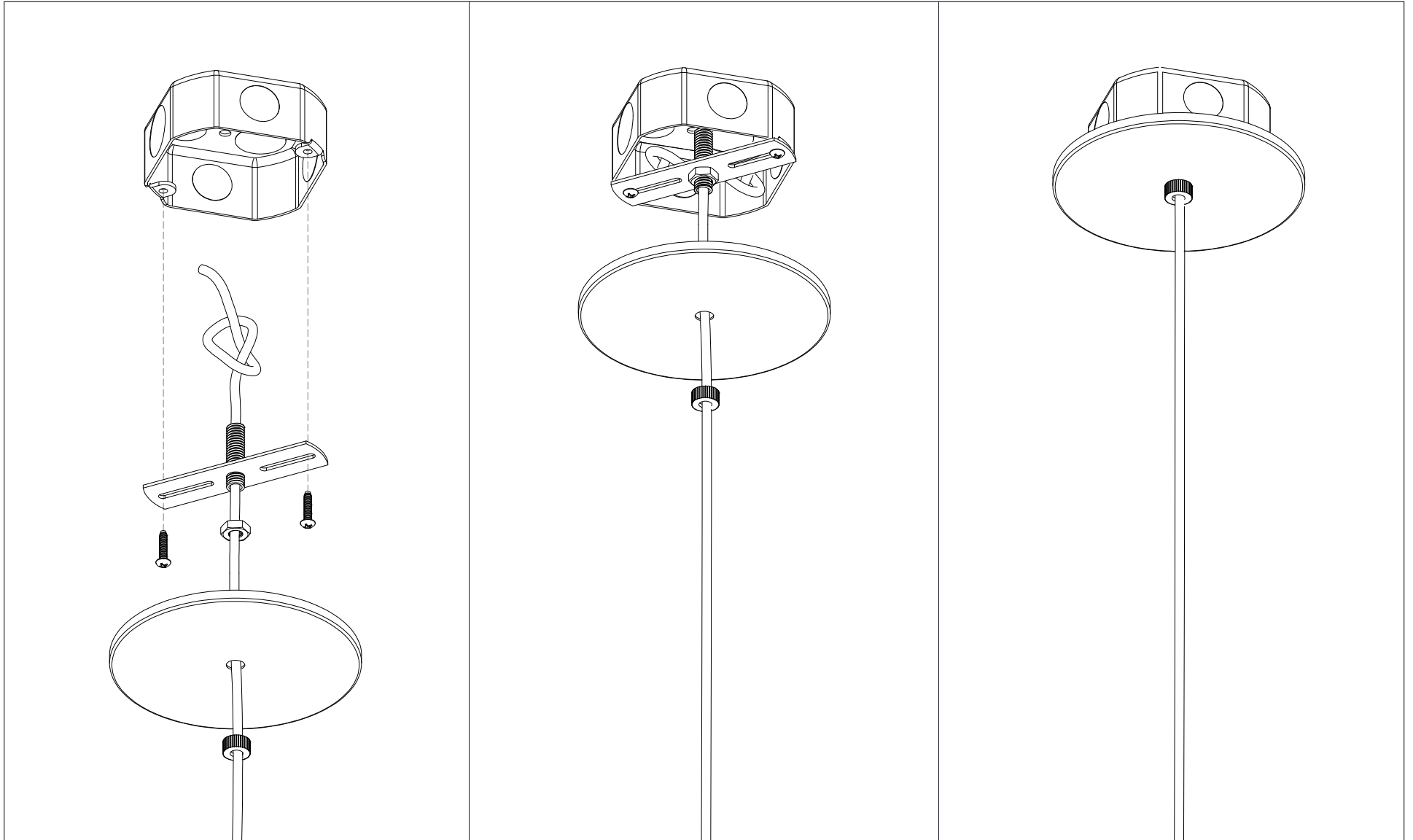






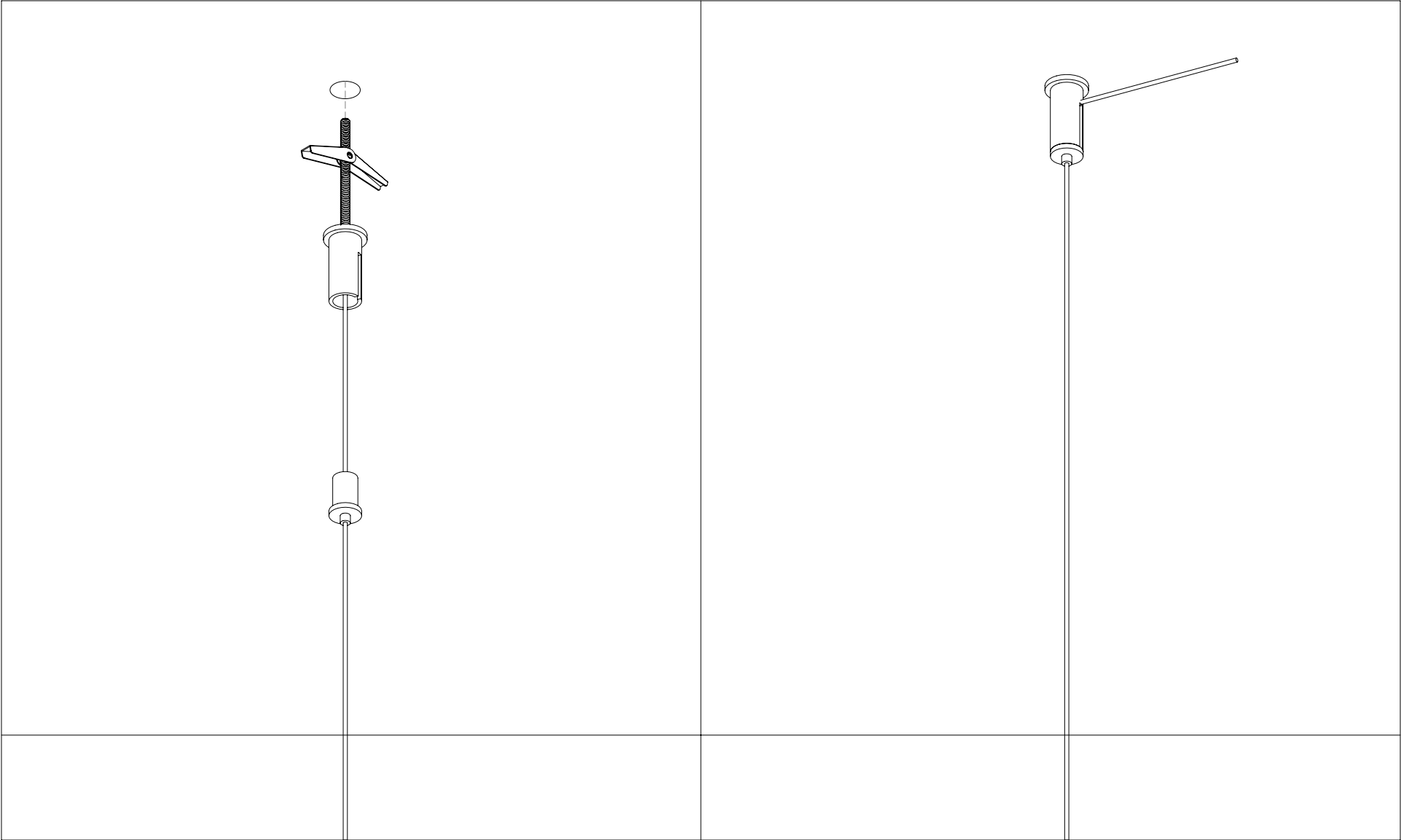
WARNING: 24VDC ONLY
*Do not wire directly to line
voltage or the fixture will be
permanently damaged.*





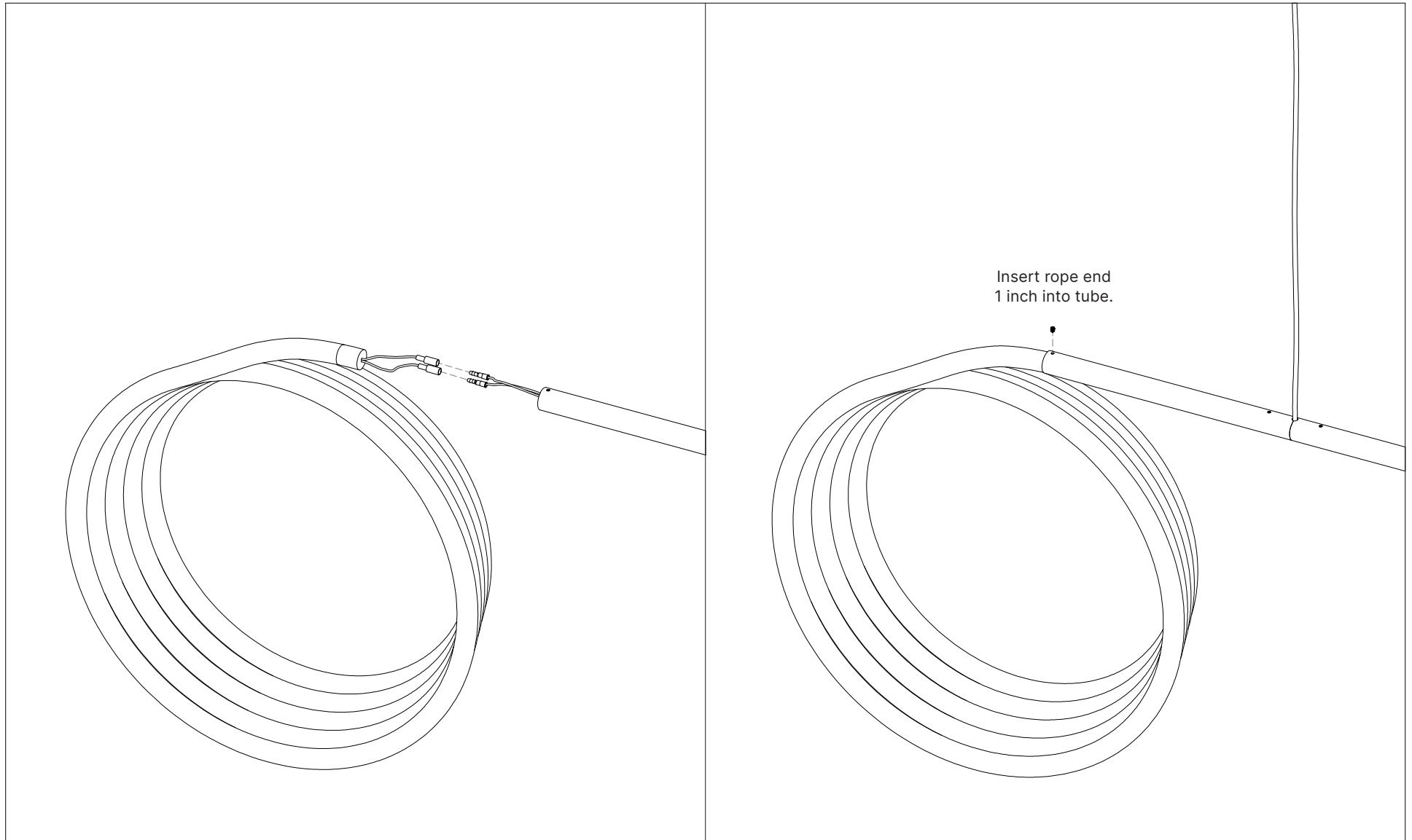
CONTACT US WITH ANY QUESTIONS!
Technical Support: (914) 294-2024 ext. 2

(914) 294-2024
WWW.LUKELAMPCO.COM
INFO@LUKELAMPCO.COM



CONTACT US WITH ANY QUESTIONS!
Technical Support: (914) 294-2024 ext. 2

(914) 294-2024
WWW.LUKELAMPCO.COM
INFO@LUKELAMPCO.COM



CONTACT US WITH ANY QUESTIONS!

Technical Support: (914) 294-2024 ext. 2

(914) 294-2024
WWW.LUKELAMPCO.COM
INFO@LUKELAMPCO.COM

